

---

# GROUP 52A

# INTERIOR

## CONTENTS

<b>GENERAL INFORMATION</b> .....	<b>52A-2</b>	<b>SEAT BELT</b> .....	<b>52A-8</b>
<b>INSTRUMENT PANEL AND FLOOR CONSOLE</b> .....	<b>52A-3</b>	<b>TRIMS</b> .....	<b>52A-10</b>
<b>SEAT</b> .....	<b>52A-5</b>	INTERIOR TRIMS .....	52A-10
FRONT SEAT .....	52A-5	DOOR TRIM .....	52A-11
REAR SEAT .....	52A-7	<b>HEADLINING</b> .....	<b>52A-12</b>

**GENERAL INFORMATION**

M2520000101013

Functionality, interior comfort, and safety have been emphasized, giving interior design for elegance and relaxation space. Various measures have been taken to protect the environment and recycle resources.

**FEATURES****Quality improvement**

1. Two-tone interior
2. Full interior trim

**Usability improvement**

1. Armrest (floor console, rear seat, front door trim, rear door trim)
2. Cup holder (floor console, rear seat armrest)
3. Bottle holder (front door trim)

**Convenient storage**

1. Glove box
2. Seatback pocket (driver's seat)
3. Card holder (glove box)
4. Tissue paper holder (floor console)
5. Floor console box
6. Door pocket (front door trim, rear door trim)

**Safety improvement**

1. Front and rear collision protection seat mechanism (front seat)

2. ISO-FIX lower anchor (rear seat outside)
3. Upper tether anchor (rear shelf)
4. ELR 3-point seat belt (driver's seat)
5. ELR/ALR 3-point seat belt (front passenger, rear)
6. Seat belt retractor with a driver's side pretensioner and force limiter
7. Seat belt retractor with a passenger's side pretensioner and force limiter
8. Headliner energy absorption rib <Vehicles without curtain air bag>

**Consideration for the optimum driving position**

1. Seat height adjustment (driver's seat)
2. Head restraint with height adjustment (front, rear)
3. Seat slide adjustment (front)

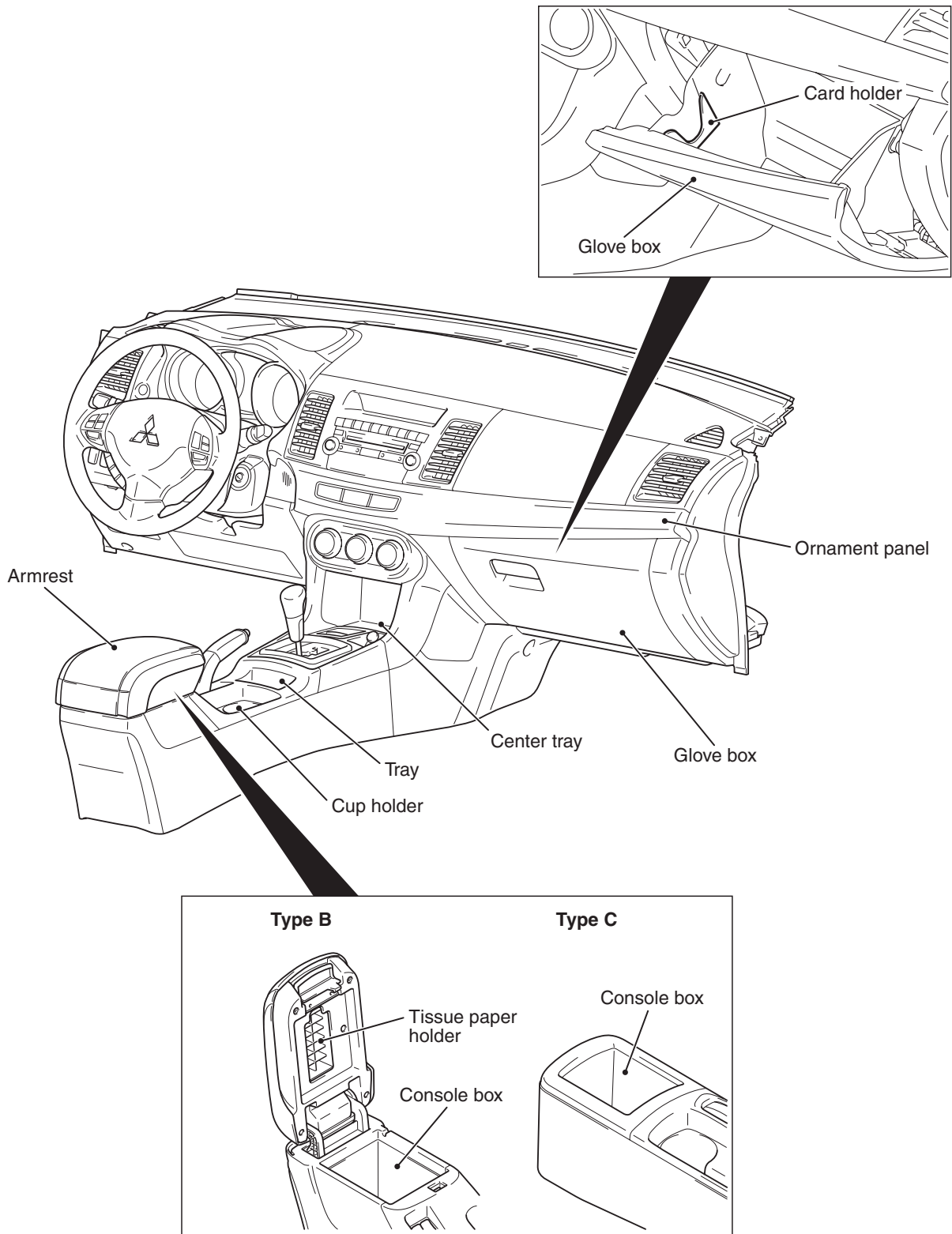
**Measures for resource recycling**

1. Aggressively use PP materials that are easy to recycle and easy to stamp material symbols on the plastic (resin) parts.
2. Reduction of chemical material (formaldehyde\*, organic solvent)

*NOTE: \*: Clear and colourless, toxic, irritating odour*

# INSTRUMENT PANEL AND FLOOR CONSOLE

M2520001000793



AC609712

The instrument panel and the floor console have the following features.

- The instrument panel is two-toned.
- The division unit of each part has been enlarged, also the gap and level difference between the instrument panel has been minimized to achieve the delicate quality.

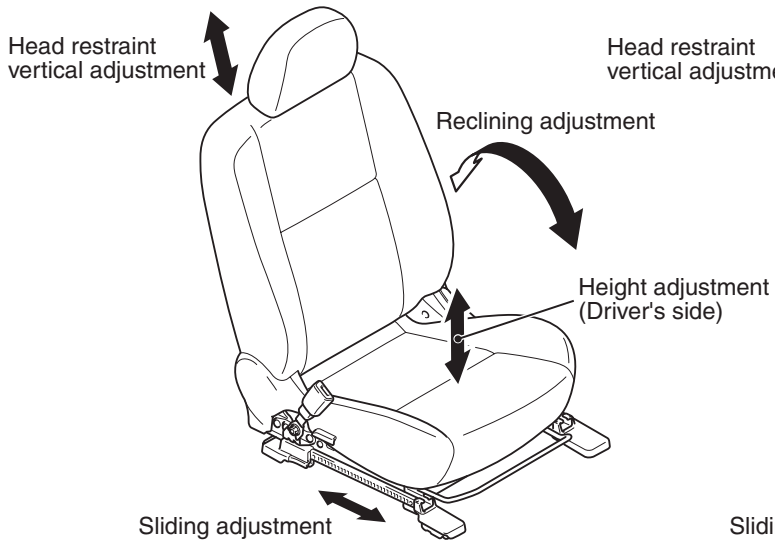
- The decorated panel creating uniformity from the instrument panel to the door trim has been adopted.
- The holder in which two cards can be stored has been installed in the glove box.
- The glove box with damper function has been installed. <Except DE>
- The center tray for storing small items has been installed in front of the selector or shift lever center panel.
- The cup holder which can hold two 20-oz bottles has been equipped. The cup holder can store two CDs in the upright position and pen-size long items horizontally.
- Under the arm rest of type B, a large box that can store 6 CDs has been equipped. (9 CDs for type C)
- A tray that can store cigarettes and lighters has been equipped. <Vehicles without console switch>
- The synthetic cloth is used for the arm rest lid to enhance luxury and soft feelings.

SEAT

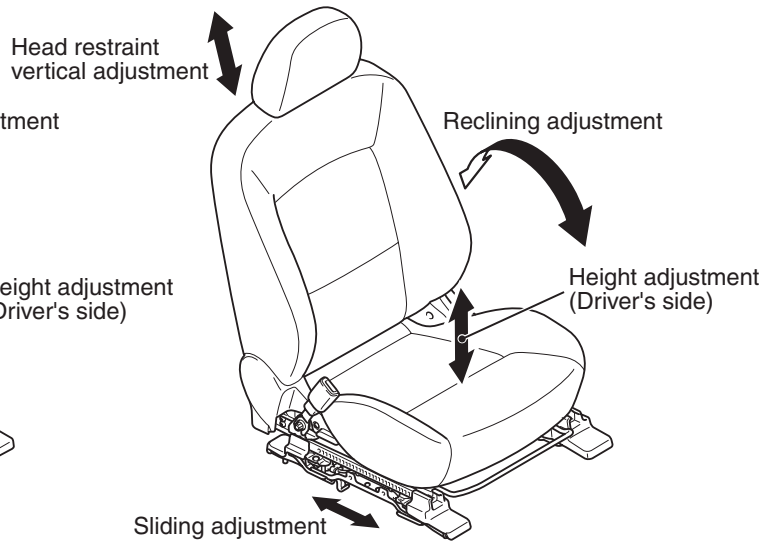
FRONT SEAT

M2520004000996

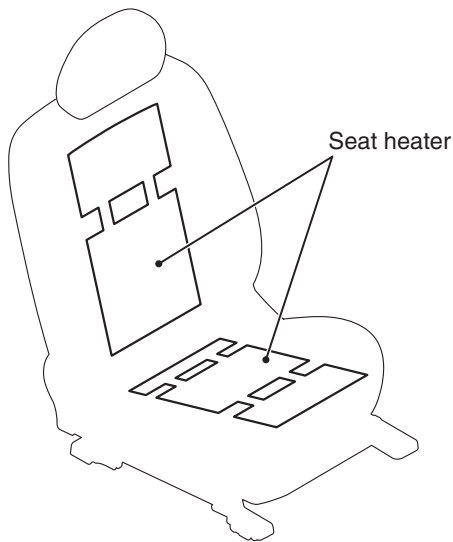
<Standard type>



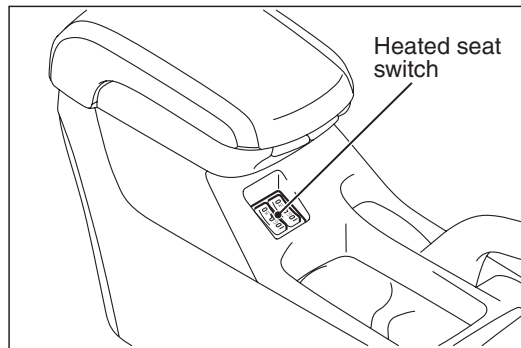
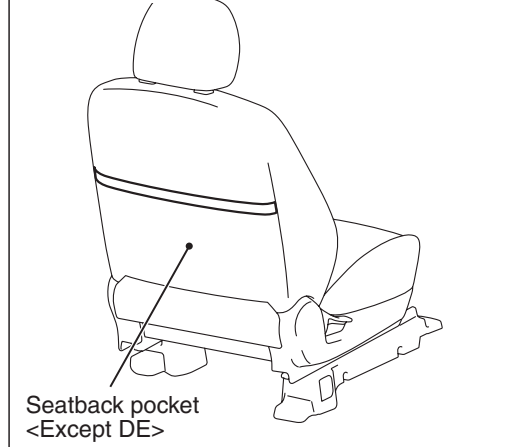
<Sports type>



<Heated seat>



<Driver's seat>



AC609378AB

The front seats offer the following advantages.

- The cross frame has been installed below the seat cushion to reduce a risk of injury by restraining the forward travel of the passenger. (Waist position travel reduction frame structure)

- The seat frame and head restraint have been installed to the proper positions to minimize the severity of whiplash injury at rear-end collision at a low speed. (Whiplash injury reduction seat structure)
- The overall height mechanism raises and lowers the seat cushion together with the seatback, thus the driver's posture is always kept at the best position, resulting in the improved riding comfort.
- The pump-type height lever has been adopted for easier operation with a light force by the vertical adjustment system. Also, the height adjustment amount has been increased for more optimum driving position.
- The variable hardness pad has been adopted for the sporty-look seat with increased bucket amount of side bolster in order to establish the sporty shape with support function <GTS>, and the standard shape which is basic and for actual use and comfortable driving.
- Heated seats are available for the driver's and passenger's seats. <ES, GTS: Option>
- The genuine leather for the seat has been upgraded to enhance the texture and luxury feeling. <GTS: Option>

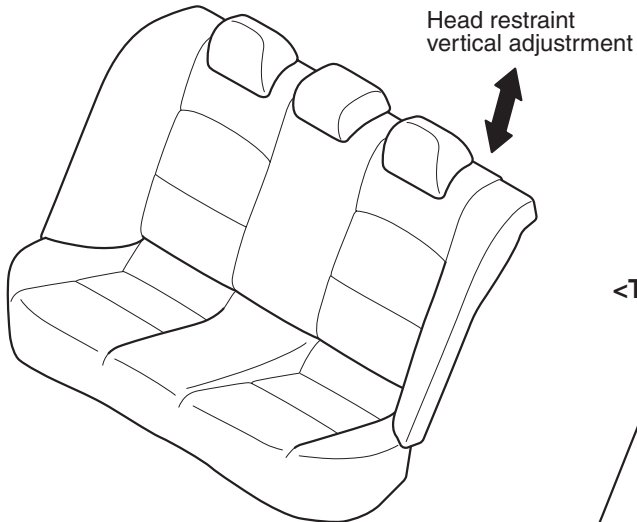
### SPECIFICATIONS FOR HEATED SEAT

Item		Specifications
ENERGY CONSUMPTION W	HIGH	61 ± 6.1
	LOW	16 ± 1.6
THERMOSTAT °C	ON → OFF	40 ± 4
	OFF → ON	30 ± 5

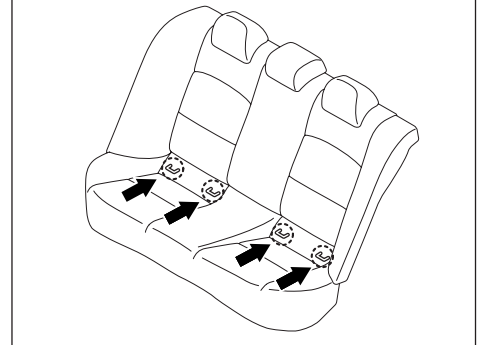
REAR SEAT

M2520007000605

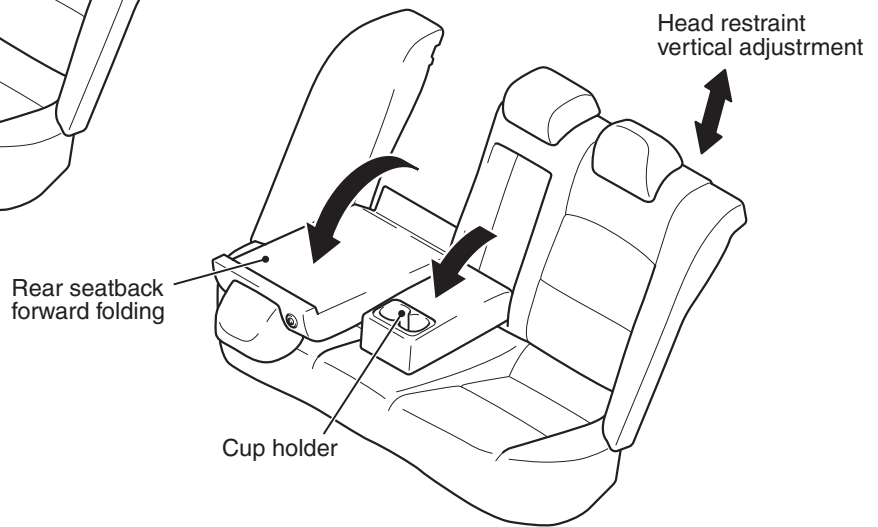
<Bench seat>



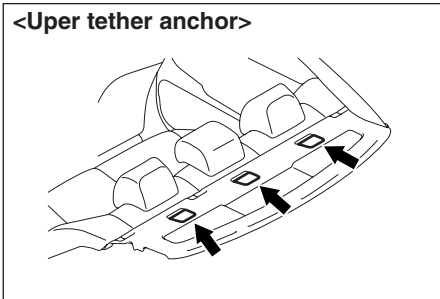
<Lower anchorage for child seat>



<Trunk through seat>



<Upper tether anchor>



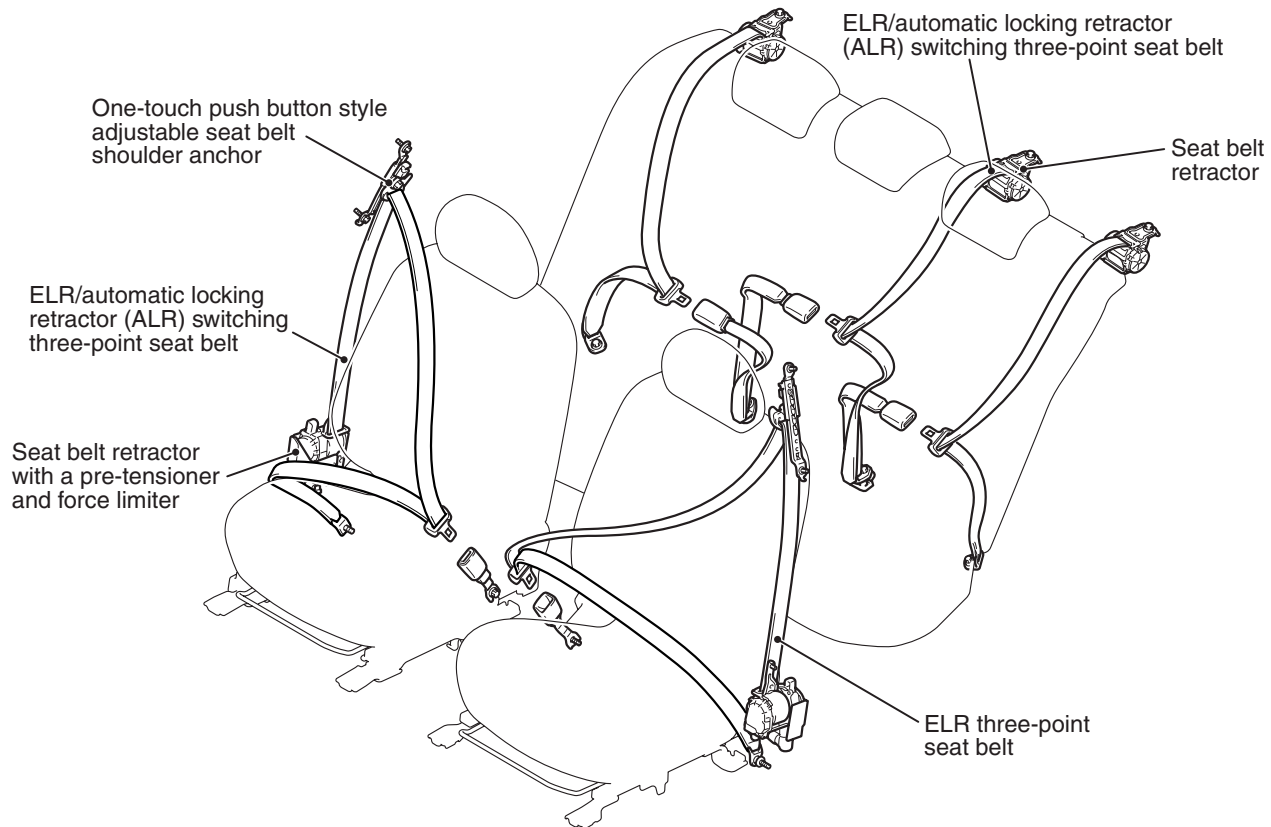
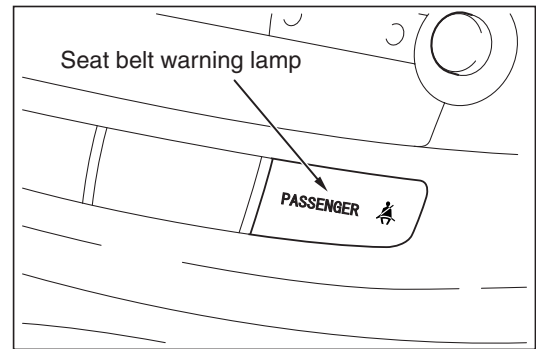
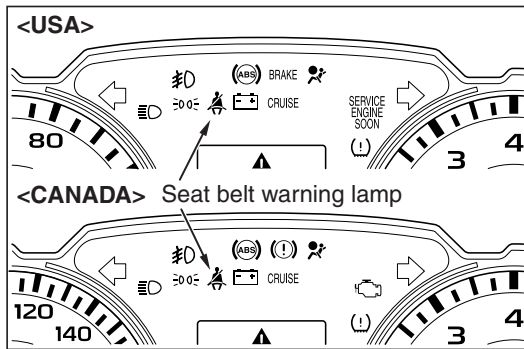
AC609174AB

A low-back bench seat is used for rear seat. The rear seat offer the following advantages:

- The center armrest has a cup holder.
- An upper tether anchor has been installed on the rear shelf trim, and an ISO-FIX lower anchor has been installed on the body side.

## SEAT BELT

M2520010000683



AC608590AB

**FRONT SEAT BELT**

- An ELR three-point seat belt (driver's side) and three-point seat belt with ELR/ALR changeover mechanism (passenger's side) is used.
- One-touch push button style adjustable seat belt anchor and retractable buckle provide the most suitable belt fitting.

- The seat belt retractor with the force limiter for the driver's seat and the front passenger's seat increase safety.
- A seat belt warning light is installed to the driver's and passenger's seat.

**REAR SEAT BELT**

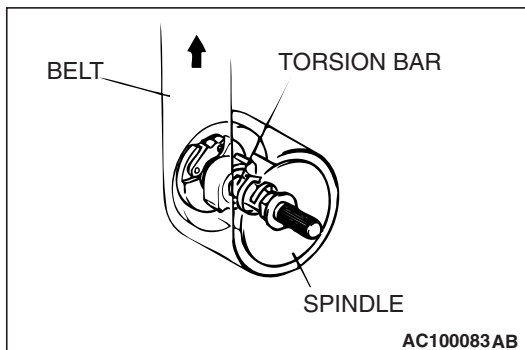
- 3-point seat belt with Automatic Locking Retractor (ALR)/ELR changeover mechanism (LH/RH/Center) is used for the rear seat.

## SEAT BELT RETRACTOR WITH FORCE LIMITER

The driver's/front passenger's seat belt retractor has been equipped with a force limiter. The force limiter is a device which operates when a predetermined force is applied, and limits the force.

### OPERATION

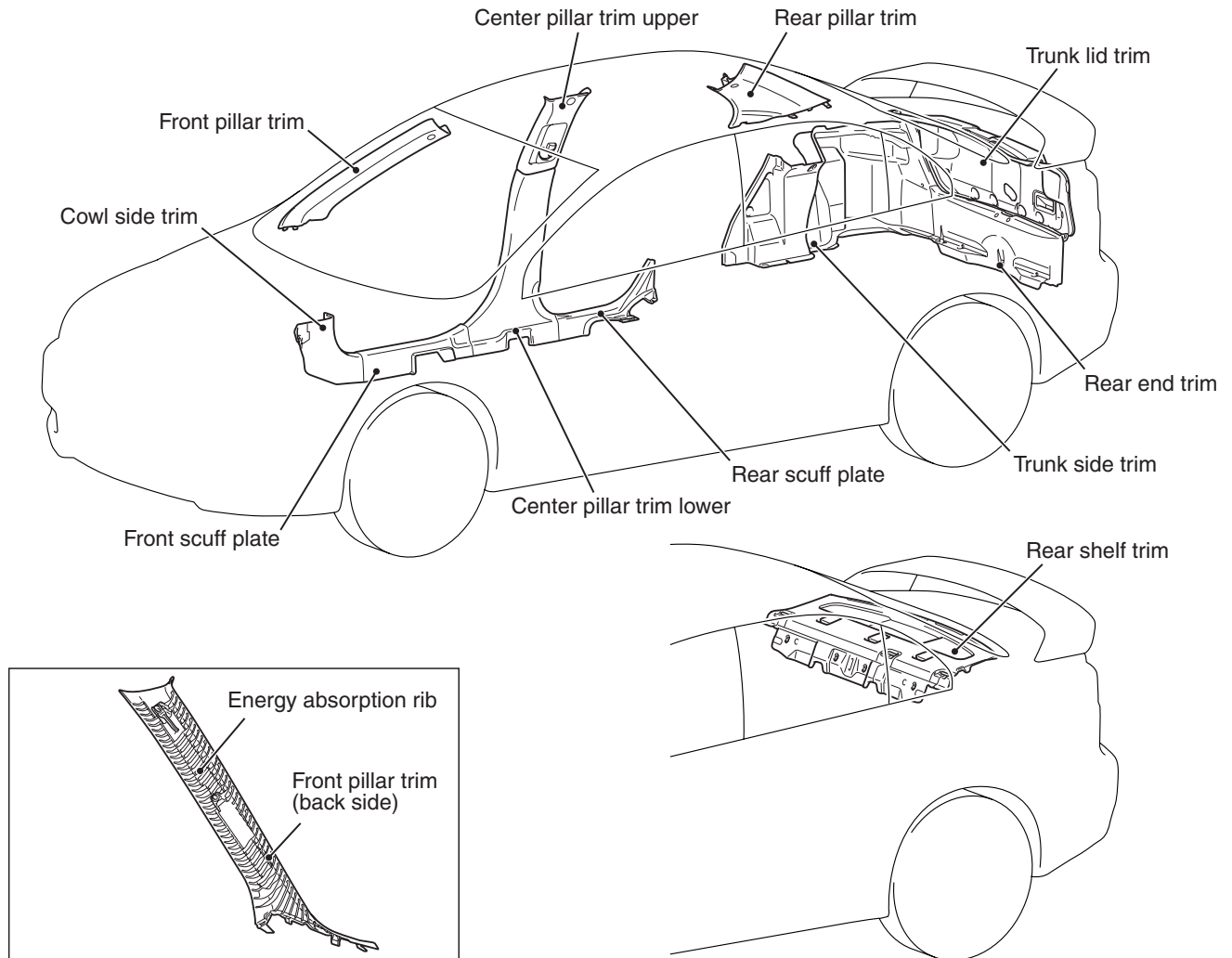
1. If a collision energy is transmitted to the seat belt, the ELR mechanism will operate to lock the seat belt.
2. If the energy increases to a predetermined value, the torsion bar will be distorted. As the spindle rotates together with the torsion bar, the seat belt webbing is pulled out, reducing the impact to the occupants.



## TRIMS

## INTERIOR TRIMS

M2520012000559



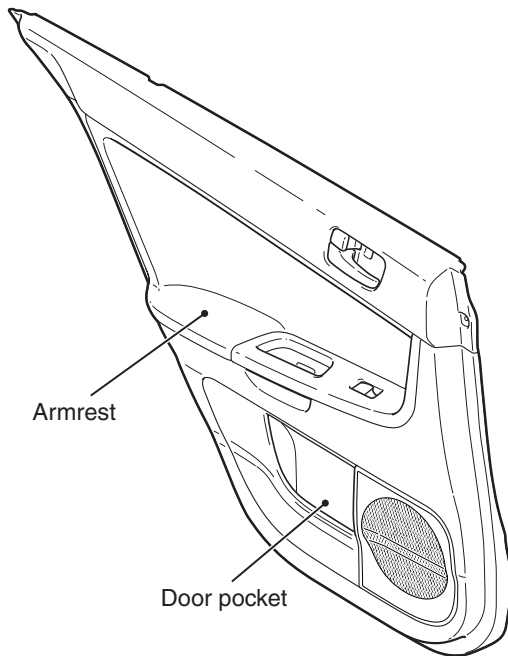
AC608126AB

- The interiors are fully covered by trims.
- The energy absorption rib molding located in the back side of the front pillar trim and the rear pillar trim protect head from side impacts and the resin materials for the trims are unbreakable materials.
- Use of nonflammable materials for the trims has increased safety as outstanding interiors. Also, material codes are indicated to deal with recycling easily.

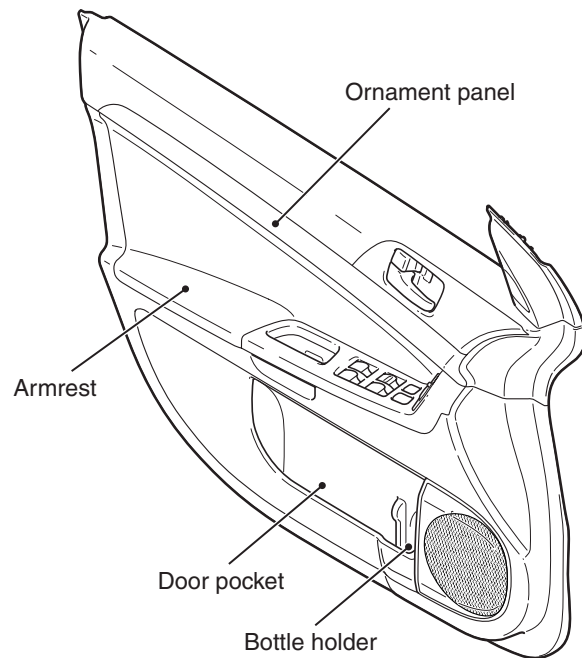
DOOR TRIM

M2520012300594

<Rear door trim>



<Front door trim>

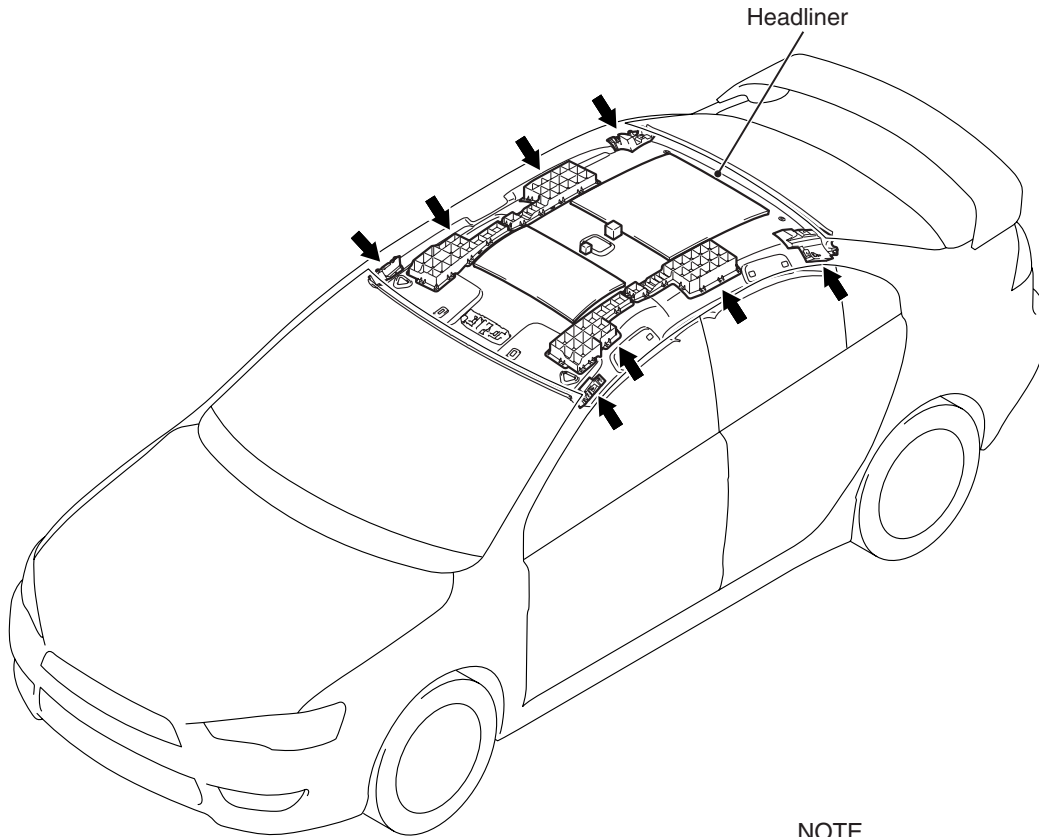


AC608432AB

- The decorated panel has been adopted for the front door trim.
- The bottle holder for bottles with shapes that are difficult to keep upright has been adopted for the front door pocket.
- The front door pocket with a large capacity has been adopted for items such as A4-size map. Also, the rear door pocket has been added.
- The shock absorbing arm rest has been adopted which reduces the mid section injuries to passengers by collapsing upon side impact.
- The arm rest which is formed with cloth has been adopted to create a continuous flow with the ornament section.

# HEADLINING

M2520014000306

**NOTE**

◀ : Energy absorption box positions

AC608128AC

Interior design with safe material has been adopted, achieving more safe and comfortable interior.

- Energy absorption pad and rib have been adopted to the inside of headliner. This reduces head injuries upon the secondary impact against the cabin during a collision, and improves safety.

# GROUP 52A

# INTERIOR

## CONTENTS

<b>GENERAL DESCRIPTION</b> .....	<b>52A-2</b>	<b>DOOR TRIM</b> .....	<b>52A-13</b>
<b>SPECIAL TOOL</b> .....	<b>52A-2</b>	REMOVAL AND INSTALLATION .....	52A-13
<b>INSTRUMENT PANEL ASSEMBLY*</b> .....	<b>52A-2</b>	<b>HEADLINING</b> .....	<b>52A-15</b>
REMOVAL AND INSTALLATION .....	52A-2	REMOVAL AND INSTALLATION .....	52A-15
<b>GLOVE BOX</b> .....	<b>52A-5</b>	<b>INSIDE REAR VIEW MIRROR</b> .....	<b>52A-17</b>
REMOVAL AND INSTALLATION .....	52A-5	<b>FRONT SEAT ASSEMBLY*</b> .....	<b>52A-17</b>
<b>INSTRUMENT CENTER PANEL</b> .....	<b>52A-6</b>	REMOVAL AND INSTALLATION .....	52A-17
REMOVAL AND INSTLLATION .....	52A-6	INSPECTION.....	52A-19
<b>INSTRUMENT LOWER PANEL</b> .....	<b>52A-7</b>	DISASSEMBLY AND ASSEMBLY .....	52A-21
REMOVAL AND INSTALLATION .....	52A-7	<b>REAR SEAT ASSEMBLY</b> .....	<b>52A-23</b>
<b>FLOOR CONSOLE ASSEMBLY</b> .....	<b>52A-8</b>	REMOVAL AND INSTALLATION .....	52A-23
REMOVAL AND INSTALLATION .....	52A-8	DISASSEMBLY AND ASSEMBLY .....	52A-26
<b>TRIMS</b> .....	<b>52A-10</b>	<b>FRONT SEAT BELT*</b> .....	<b>52A-28</b>
REMOVAL AND INSTALLATION .....	52A-10	REMOVAL AND INSTALLATION .....	52A-28
		INSPECTION.....	52A-29
		<b>REAR SEAT BELT</b> .....	<b>52A-31</b>
		REMOVAL AND INSTALLATION .....	52A-31

### WARNINGS REGARDING SERVICING OF SUPPLEMENTAL RESTRAINT SYSTEM (SRS) EQUIPPED VEHICLES

#### **WARNING**

- *Improper service or maintenance of any component of the SRS, or any SRS-related component, can lead to personal injury or death to service personnel (from inadvertent firing of the air bag) or to the driver and passenger (from rendering the SRS inoperative).*
- *Service or maintenance of any SRS component or SRS-related component must be performed only at an authorized MITSUBISHI dealer.*
- *MITSUBISHI dealer personnel must thoroughly review this manual, and especially its GROUP 52B - Supplemental Restraint System (SRS) before beginning any service or maintenance of any component of the SRS or any SRS-related component.*

#### NOTE

The SRS includes the following components: SRS air bag control unit, SRS warning light, front impact sensors, driver's and passenger's (front) air bag modules, knee air bag module, side-airbag module, curtain air bag module, side impact sensors, seat belt pre-tensioners, clock spring, and interconnecting wiring. Other SRS-related components (that may have to be removed/installed in connection with SRS service or maintenance) are indicated in the table of contents by an asterisk (\*).

## GENERAL DESCRIPTION

M1521000100429

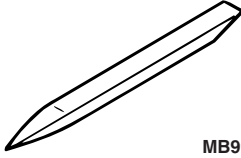
## OPERATION

## SEAT BELT WARNING SYSTEM

If the driver turns the ignition switch to the "ON" position without fastening the seat belt, the seat belt warning light illuminates.

## SPECIAL TOOL

M1521000600576

Tool	Tool number and name	Supersession	Application
 MB990784	MB990784 Ornament remover	General service tool	Removal of switch, trim, etc.

## INSTRUMENT PANEL ASSEMBLY

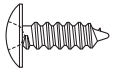
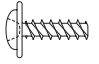
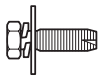
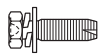
## REMOVAL AND INSTALLATION

M1521001701591

**⚠ WARNING**

**For removal and installation of the passenger's side air bag module, always observe the service procedures described in GROUP 52B, Air Bag Module and Clock Spring P.52B-367.**

The following bolts and screws are used for installing the instrument panel. Bolts and screws are indicated as marks shown in the illustration in the sections of "Removal and Installation" and "Disassembly and Assembly."

Name	Symbol	Size (D × L) mm	Color	Shape
Tapping screw	a	5 × 12	—	 AC104450
	b	5 × 16	—	
	c	5 × 12	—	 AC104436
Bolt with washer	d	5 × 20	—	 AC104417
	e	6 × 16	—	 AC104429

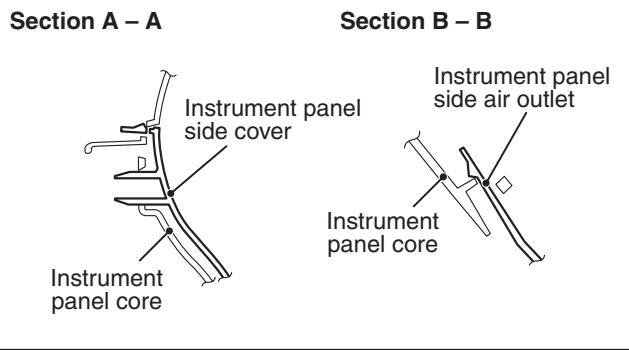
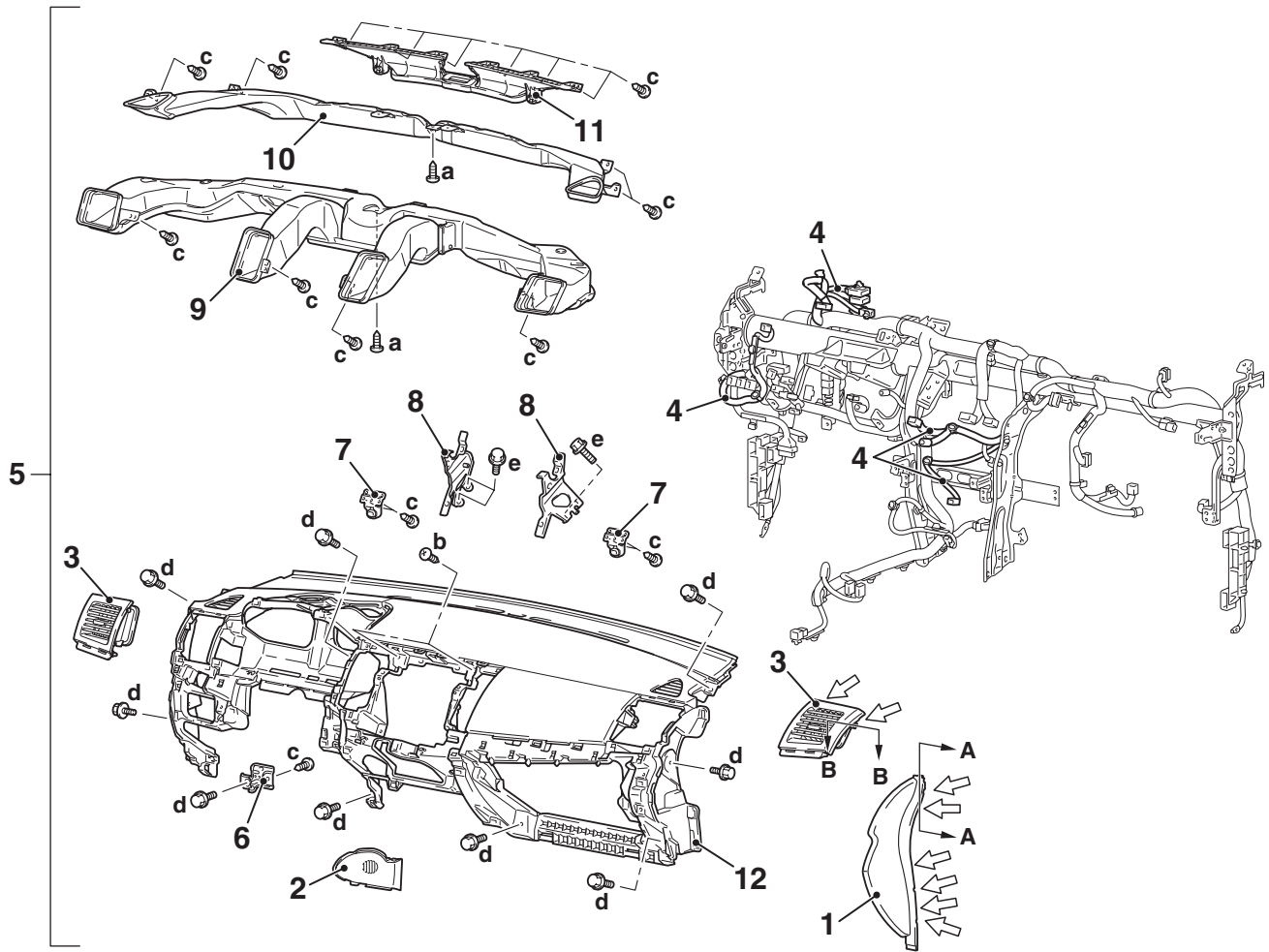
D: Thread diameter, L: Effective thread length

 **CAUTION**

- Refer to GROUP 52B-SRS Service Precautions [P.52B-24](#) and Air bag Module and Clock Spring [P.52B-367](#) before removing the passenger side air bag module.
- Do not subject the SRS-ECU to any shocks when removing or installing the instrument panel.

**Pre-removal and Post-installation Operation**

- Removal and Installation of Front Pillar Trim (Refer to [P.52A-10](#)).
- Removal and Installation of Instrument Under Cover (Refer to [P.52A-10](#)).
- Removal and Installation of Glove Box (Refer to [P.52A-10](#)).
- Removal and Installation of Instrument Cover Lower, Air Outlet Garnish (Refer to [P.52A-10](#)).
- Removal and Installation of Audio Unit (Refer to GROUP 54A, Radio with CD Player [P.54A-307](#)).
- Removal and Installation of Audio Visual Navigation Unit, GPS antenna (Refer to GROUP 54A, MMCS [P.54A-391](#)).
- Removal and Installation of Steering shaft (Refer to GROUP 37, Steering Column Shaft [P.37-25](#)).
- Removal and Installation of Hands-free Cellular Phone System (Refer to GROUP 54A, Hands-free Module [P.54A-435](#)).
- Removal and Installation of Sensors (Refer to GROUP 55B, Interior Temperature Sensor [P.55B-25](#)).



AC610166AB

Note  
 : Claw positions

**Removal steps**

1. Instrument panel side cover
- Combination meter (Refer to GROUP 54A, Combination Meter P.54A-90).
2. Instrument panel console side cover
3. Instrument panel side air outlet
4. Instrument panel harness clamp
5. Instrument panel assembly
  - Photo sensor (Refer to GROUP 55B, Sensors P.55B-25).

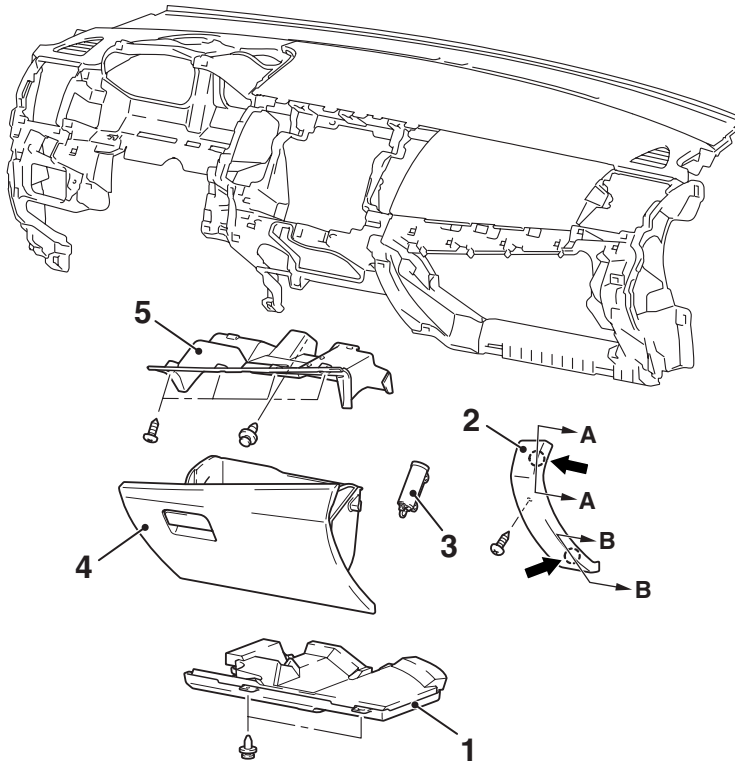
**Removal steps (Continued)**

- Passenger's (front) air bag module (Refer to GROUP 52B, Air Bag Module(s) and Clock Spring P.52B-367).
- 6. Instrument panel side bracket lower
- 7. Instrument panel holder
- 8. Instrument panel reinforcement center
- 9. Ventilator air distribution duct
- 10. Side defroster duct
- 11. Defroster nozzle
- 12. Instrument panel

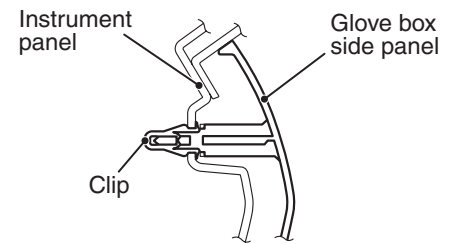
# GLOVE BOX

## REMOVAL AND INSTALLATION

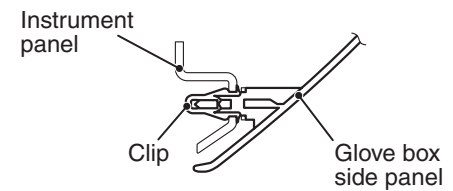
M1521011500034



### Section A – A



### Section B – B



AC610054AB

Note

← : Clip positions

### Removal steps

1. Bottom cover (passenger side)
2. Glove box side panel
3. Glove box damper <Vehicles with glove box damper>

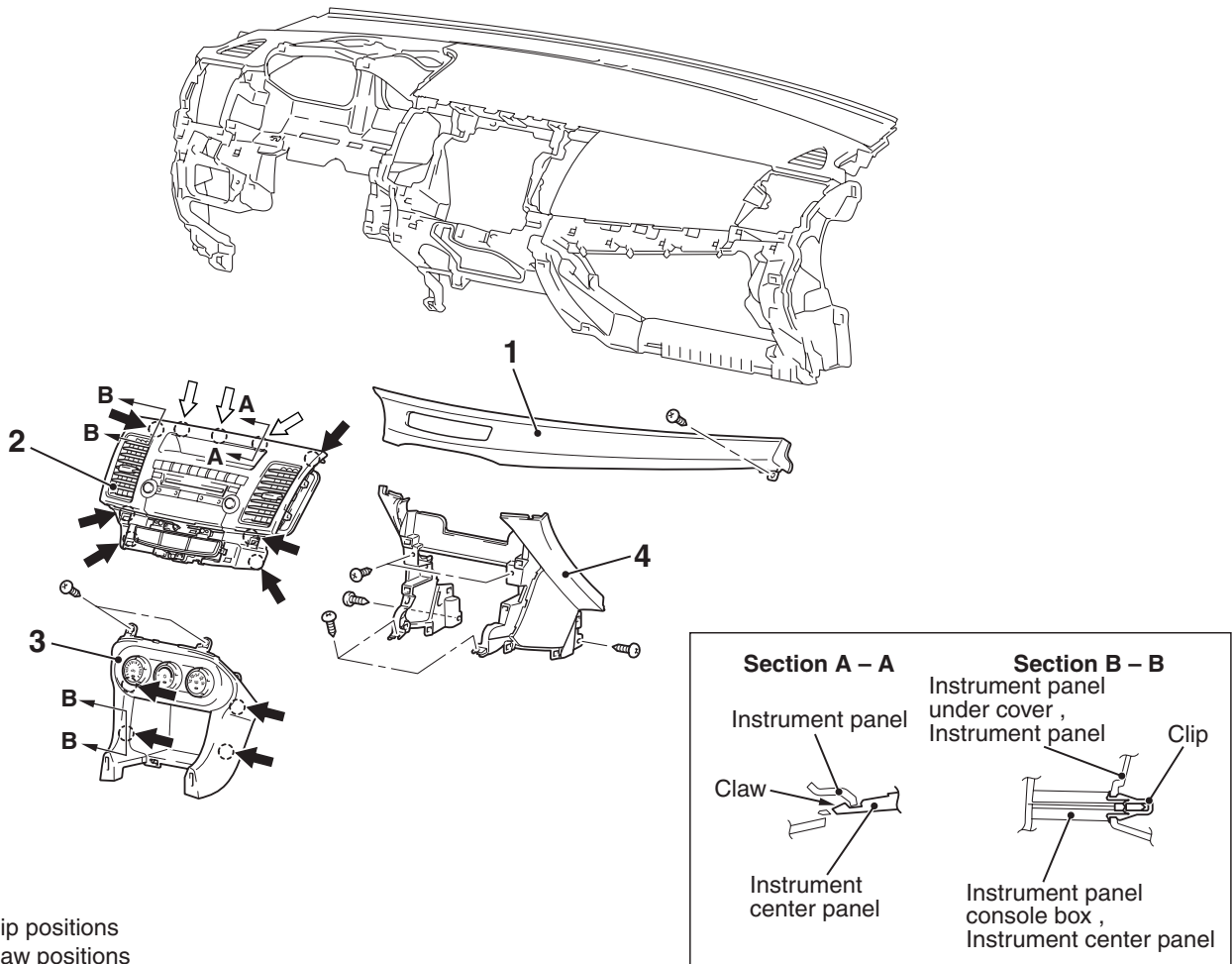
### Removal steps (Continued)

4. Glove box
5. Glove box cover

# INSTRUMENT CENTER PANEL

## REMOVAL AND INSTLLATION

M1521011300030



Note

- ◀ : Clip positions
- ⇐ : Claw positions

**Removal steps**

- Glove box side panel (Refer to P.52A-5).
- 1. Instrument panel air outlet garnish lower (RH)
- 2. Instrument center panel

**Removal steps (Continued)**

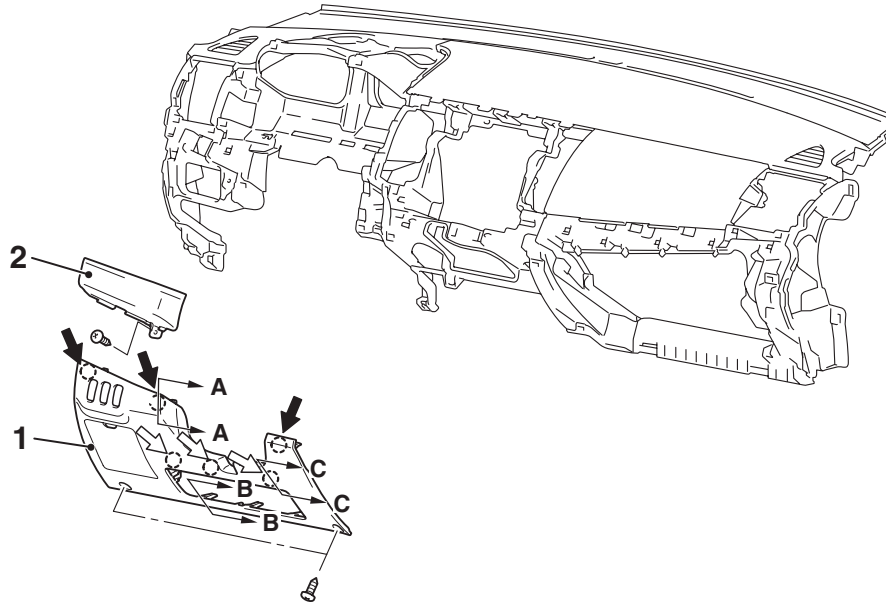
- Floor console assembly (Refer to P.52A-8).
- 3. Instrument console box
- Floor console side cover (Refer to P.52A-8).
- 4. Instrument under cover

AC610150AB

# INSTRUMENT LOWER PANEL

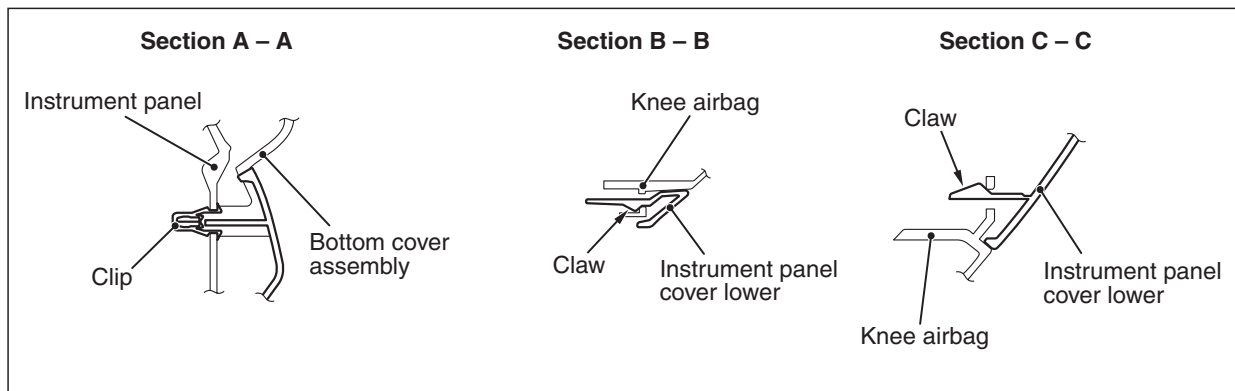
## REMOVAL AND INSTALLATION

M1521011700038



Note

- ➔ : Clip positions
- ↔ : Claw positions



AC610152AB

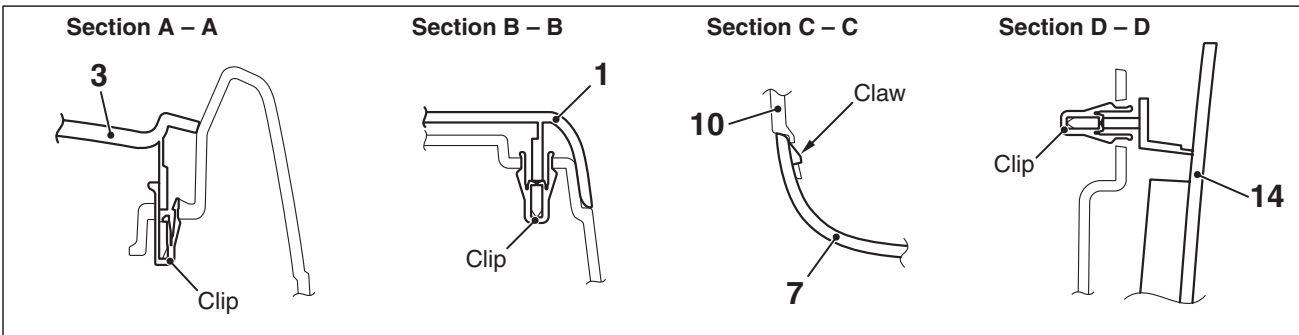
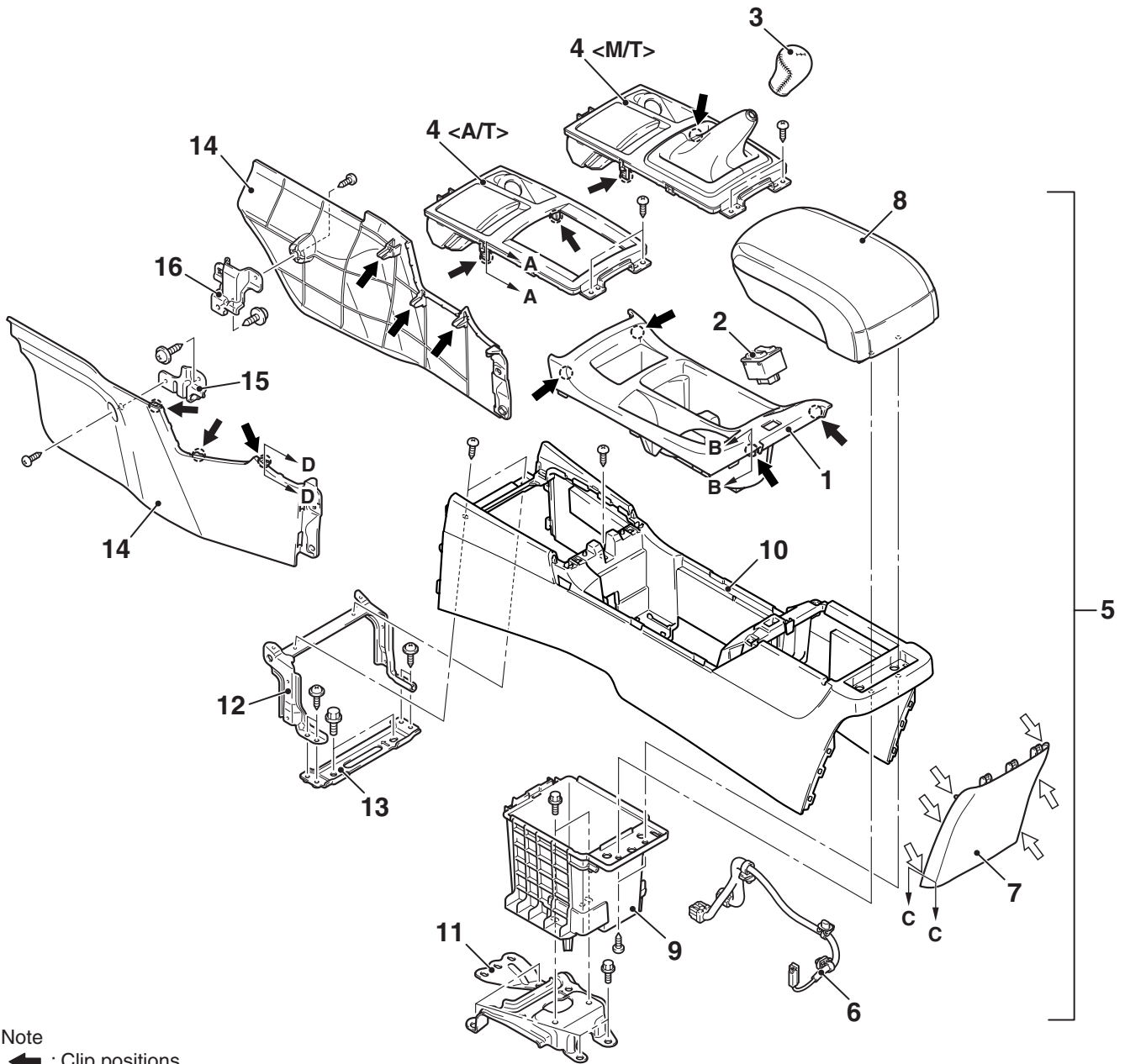
### Removal steps

1. Instrument panel cover lower
2. Instrument panel air outlet garnish lower (LH)

# FLOOR CONSOLE ASSEMBLY

## REMOVAL AND INSTALLATION

M1521005200368



AC608810AB

**Removal steps**

1. Floor console assembly
2. Heated seat switch
3. Shift knob
4. Floor console panel assembly
5. Floor console assembly
6. Floor console harness
7. Floor console cover
8. Floor console box

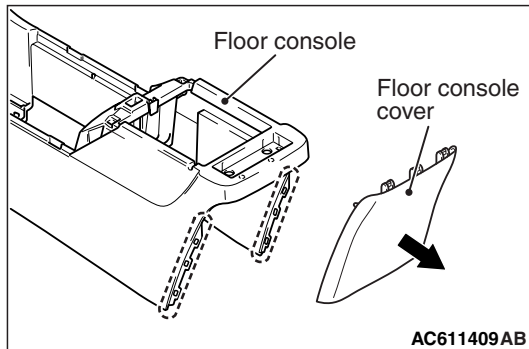
**Removal steps (Continued)**

- >>A<<
9. Floor console lid
  10. Floor console
  11. Floor console bracket rear
  12. Floor console bracket (A)
  13. Floor console bracket (B)
  14. Floor console side cover
  15. Floor console front bracket (LH)
  16. Floor console front bracket (RH)

**REASSEMBLY SERVICE POINT**

**>>A<< FLOOR CONSOLE REASSEMBLY**

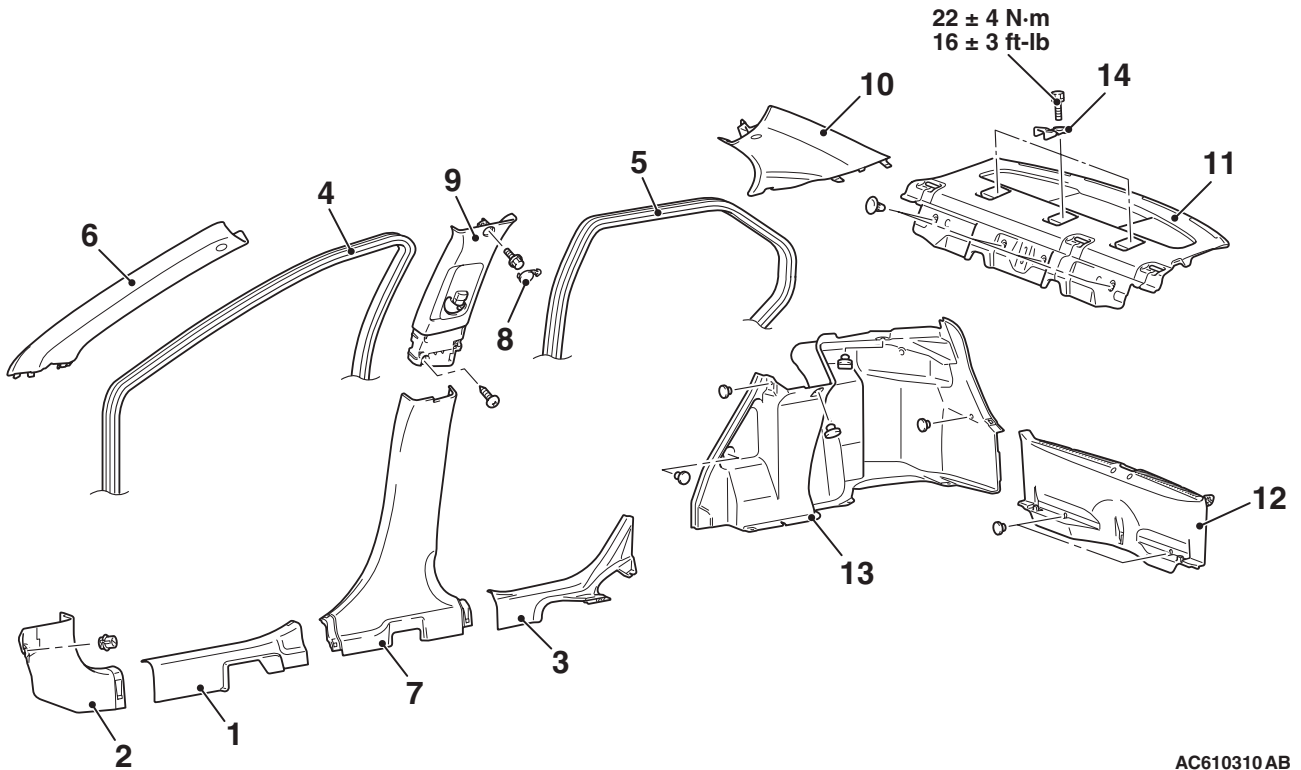
Floor console rear ends (shown in the dotted lines) may damage when removing the floor console cover. You can neglect this damage and floor console is reusable.



## TRIMS

## REMOVAL AND INSTALLATION

M1521001101049



AC610310 AB

**Removal steps**

1. Front scuff plate
2. Cowl side trim
  - Rear seat cushion (Refer to P.52A-23).
3. Rear scuff plate
4. Front door opening trim
5. Rear door opening trim
6. Front pillar trim
7. Lower center pillar trim
8. Upper center pillar trim cap

**Removal steps (Continued)**

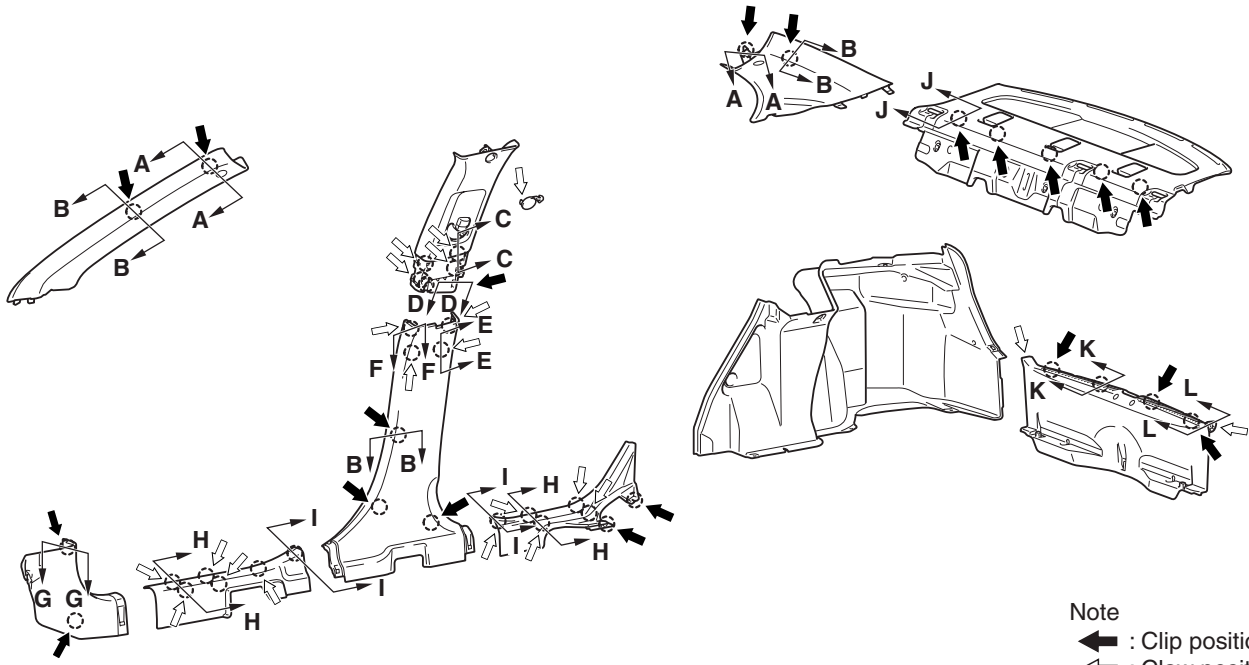
- Outer seat belt (Refer to P.52A-28).
- 9. Upper center pillar trim
- 10. Rear pillar trim
  - Seat side back (Refer to P.52A-23).
- 11. Rear shelf trim
- 12. Rear end trim
- 13. Trunk side trim
- 14. Child restraint fitting

&lt;&lt;A&gt;&gt;

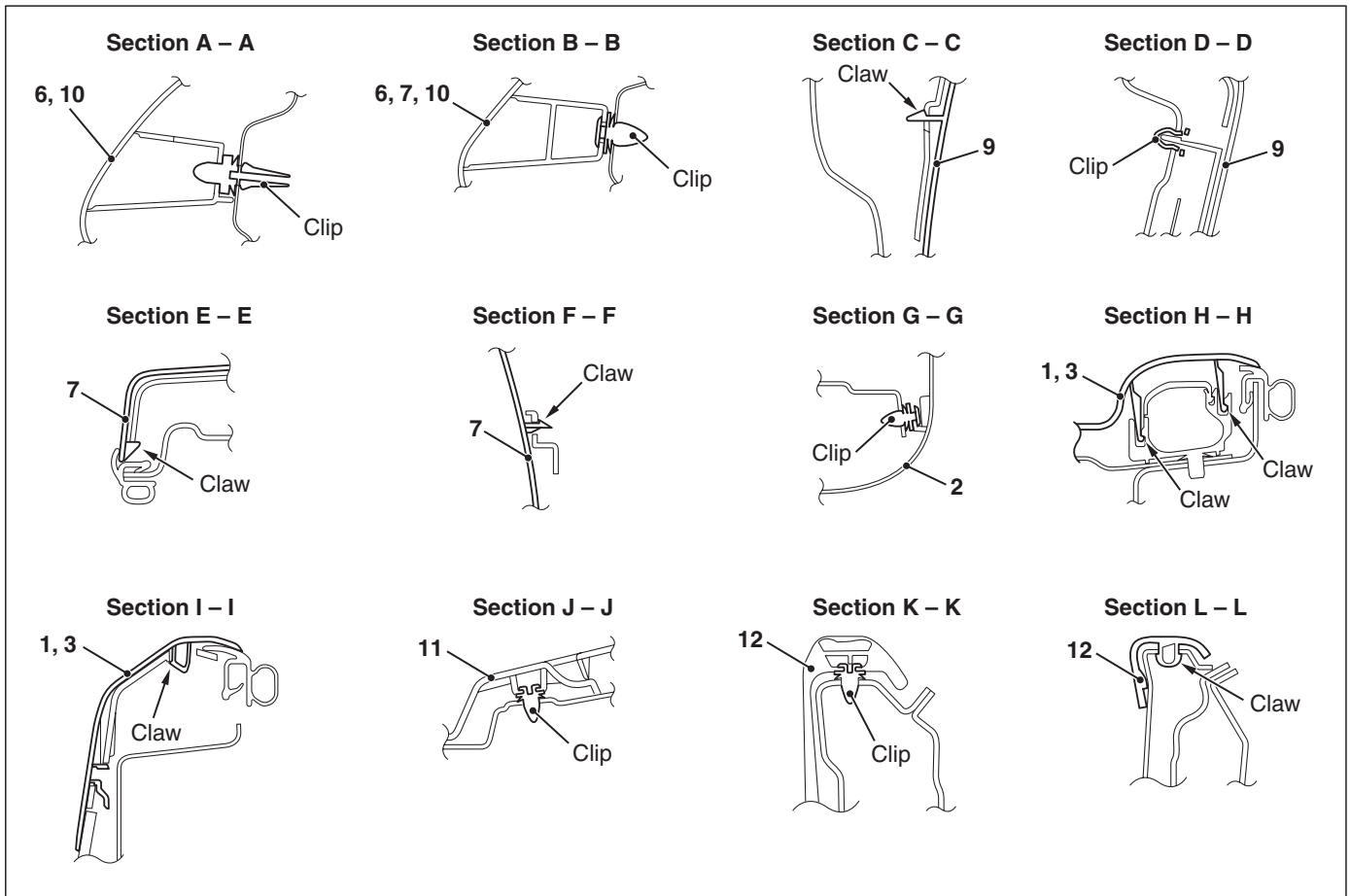
**Required Special Tool:**

- MB990784: Ornament Remover

CLIP POSITION



Note  
 ◄ : Clip positions  
 ◁ : Claw positions



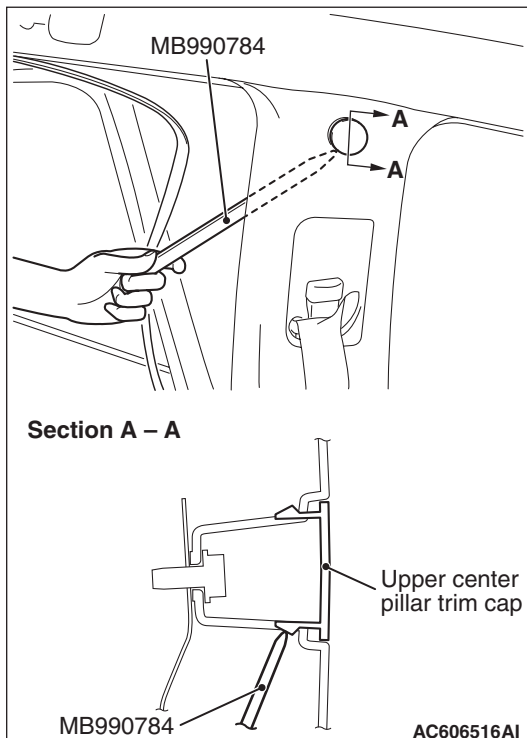
AC610026AB

NOTE: Each number in the illustration indicates a part number.

## REMOVAL SERVICE POINT

<<A>> UPPER CENTER PILLAR TRIM CAP  
REMOVAL

Remove the opening trim. Remove the upper center pillar trim cap by inserting the special tool MB990784 between the upper center pillar trim and body as shown in the illustration.

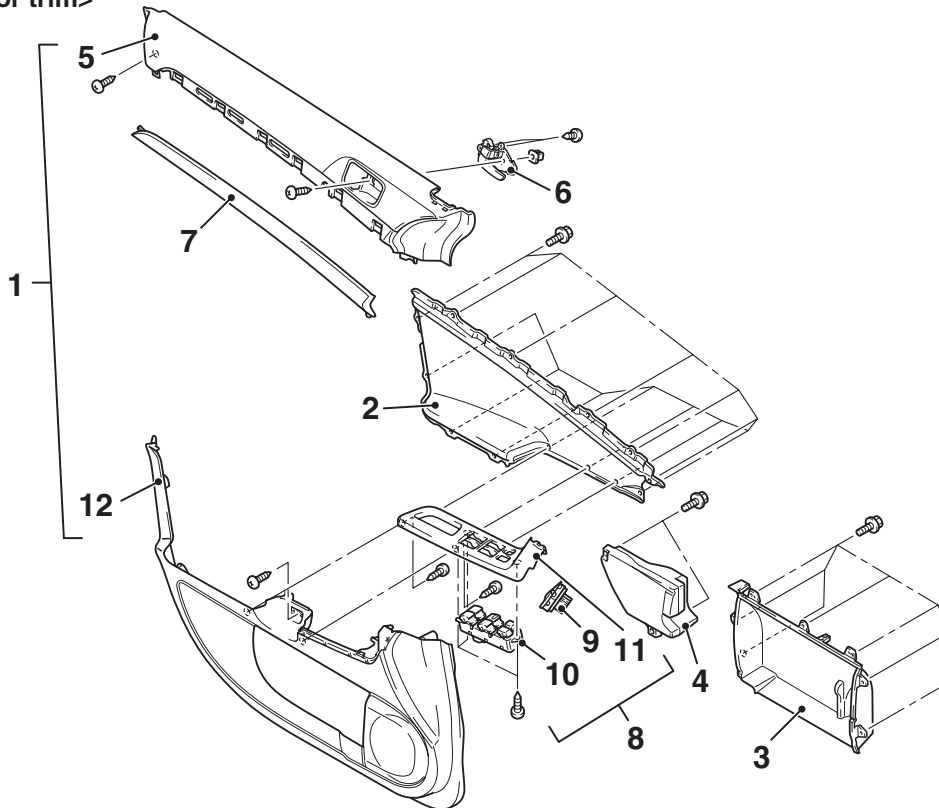


# DOOR TRIM

## REMOVAL AND INSTALLATION

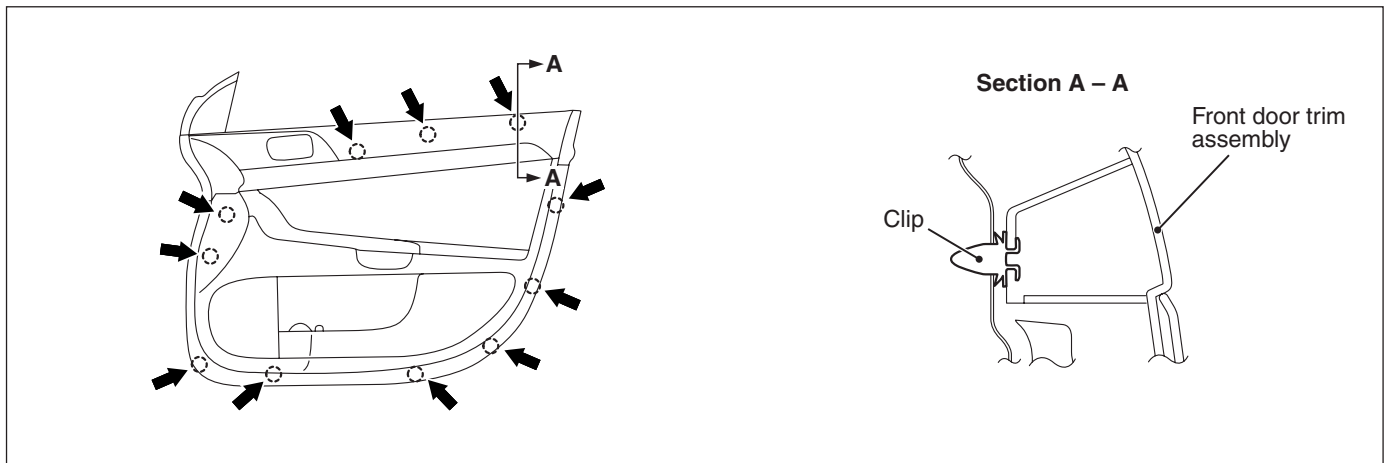
M1521006400752

<Front door trim>



Note

◄ : Clip positions



AC611164AB

### Removal steps

1. Front door trim assembly
2. Front door ornament
3. Front door pocket
4. Front lower pad energy absorption
5. Front door trim upper
6. Door inside handle
7. Decoration panel
8. Front door power window switch panel assembly
9. Remote control mirror switch

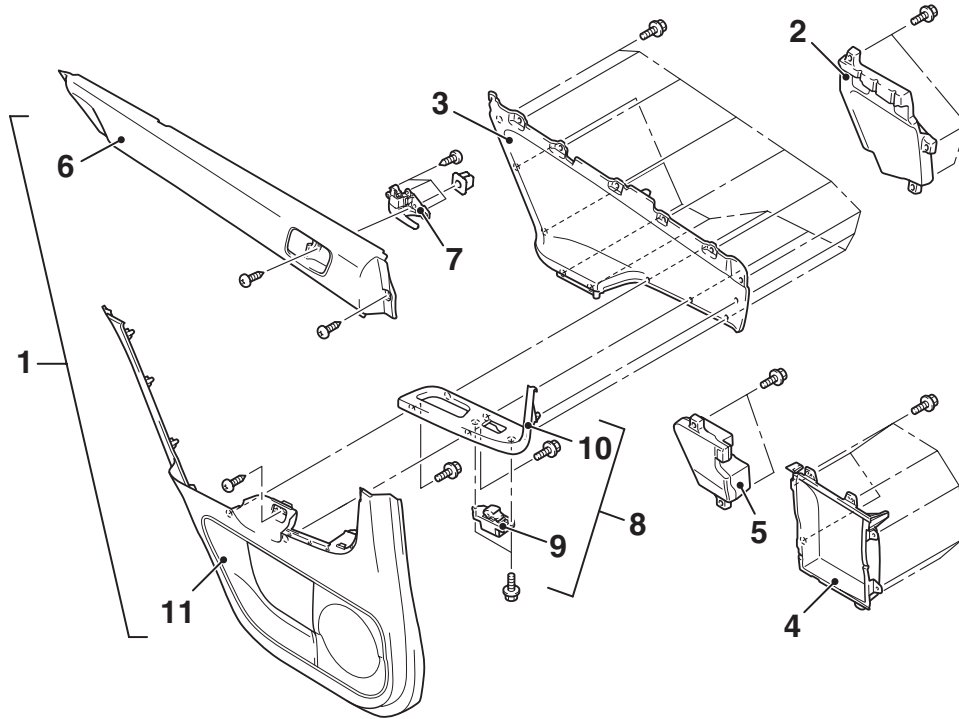
### Removal steps (Continued)

10. Front door power window switch
11. Front power window switch panel
12. Front door trim lower

### Required Special Tool:

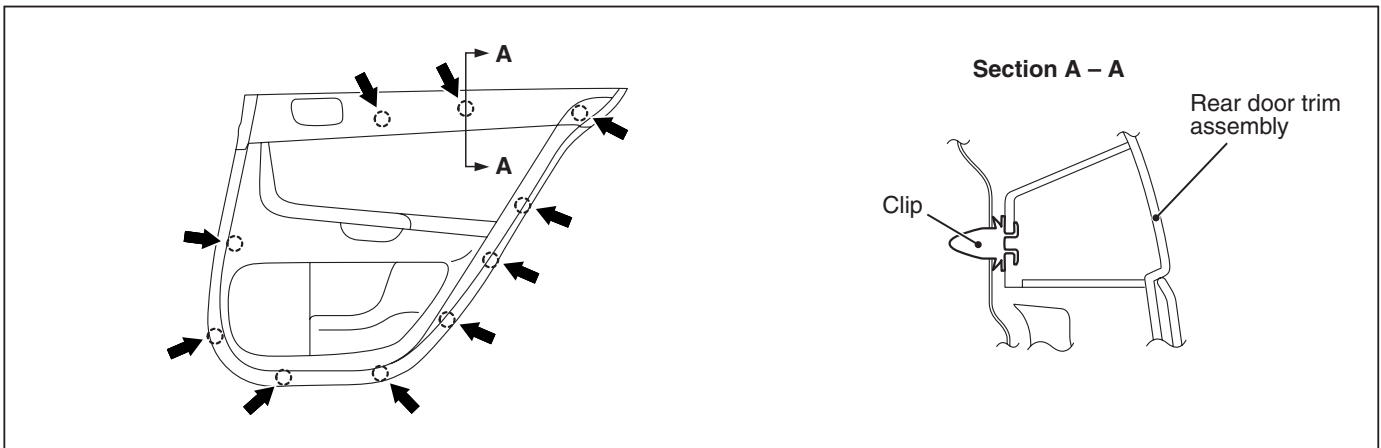
- MB990784: Ornament Remover

<Rear door trim>



NOTE

◀ : Clip positions



AC611175AB

**Removal steps**

1. Rear door trim assembly
2. Rear upper pad energy absorption
3. Rear door ornament
4. Rear door pocket
5. Rear lower pad energy absorption
6. Rear door trim upper
7. Door inside handle

**Removal steps (Continued)**

8. Rear door power window switch panel assembly
9. Rear door power window switch
10. Rear power window switch panel
11. Rear door trim lower

**Required Special Tool:**

- MB990784: Ornament Remover

# HEADLINING

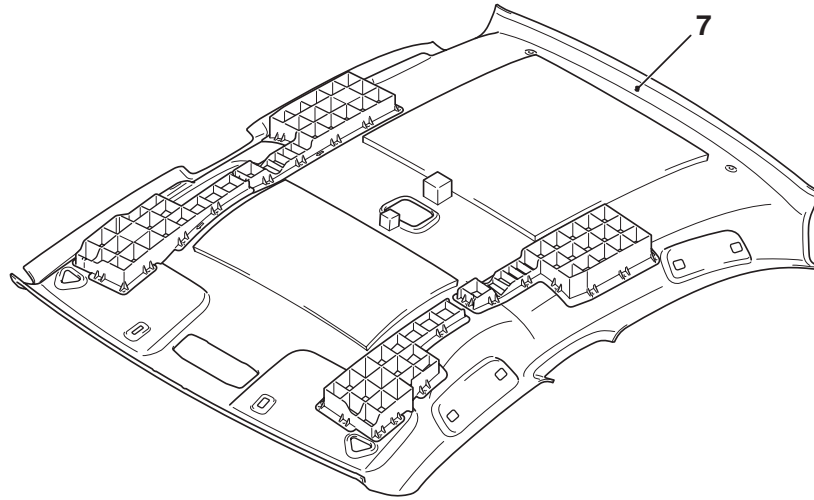
## REMOVAL AND INSTALLATION

M1521001400973

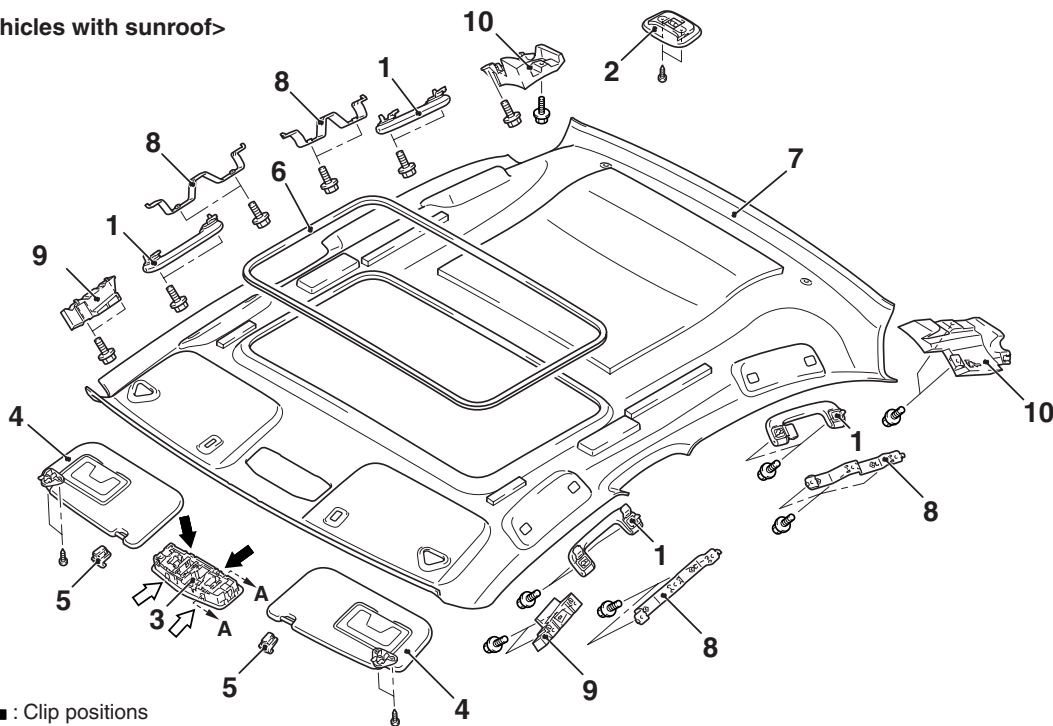
### Pre-removal and Post-installation Operation

- Removal and Installation of Front Pillar Trim, Upper Center Pillar Trim, Rear Pillar Trim (Refer to P.52A-10).
- Removal and Installation of Instrument Under Cover (Refer to P.52A-6).

<Vehicles without sunroof>

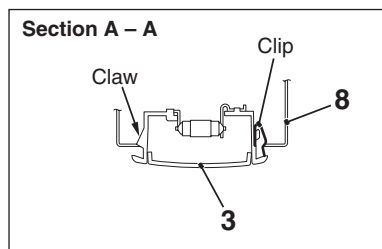


<Vehicles with sunroof>



Note

- (1) : Clip positions  
 (2) : Claw positions



AC609656AB

TSB Revision

**Removal steps**

1. Assist grip
2. Rear dome light assembly <Vehicles without sunroof>
3. Front dome light
4. Sun visor assembly
5. Sun visor holder
6. Sunroof lid inner weather strip rear <Vehicles with sunroof>
7. Headlining

&lt;&lt;A&gt;&gt;

&lt;&lt;B&gt;&gt;

**Removal steps (Continued)**

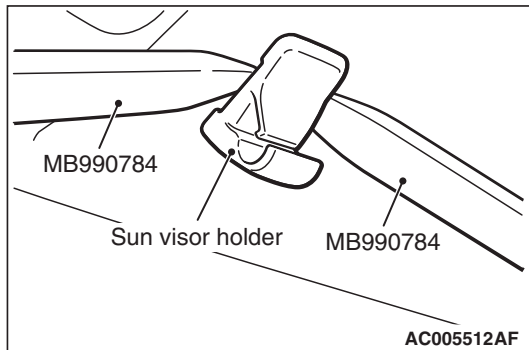
8. Assist grip bracket
9. Front side roof energy absorption box <Vehicle with sunroof>
10. Rear side roof energy absorption box <Vehicle with sunroof>

**Required Special Tool:**

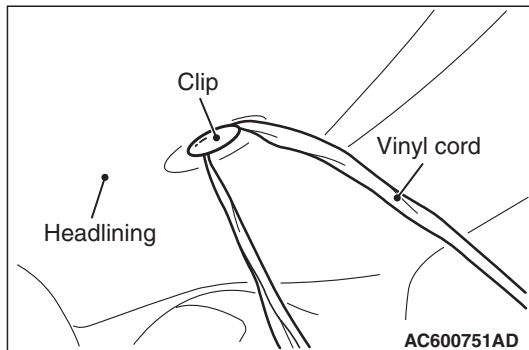
- MB990784: Ornament Remover

**REMOVAL SERVICE POINTS****<<A>> SUN VISOR HOLDER REMOVAL**

Insert the special tool MB990784 into side claws of the sun visor holder through the both sides of the sun visor holder to remove the hinges.

**<<B>> HEADLINING ASSEMBLY REMOVAL**

To remove the clip, insert a vinyl cord into a clearance between the clip and the headlining, and pass it around the clip. Then, pull out the clip downwards while pulling the vinyl cord.

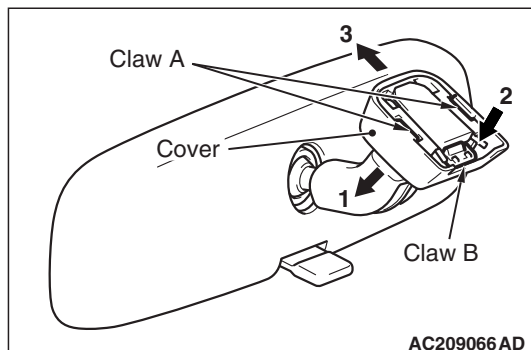


## INSIDE REAR VIEW MIRROR

M1521002600561

### REMOVAL SERVICE POINT

1. Disengage claw A and lower the cover in the arrow 1 direction.
2. Push claw B in the arrow 2 direction to unlock, and pull out the mirror in the arrow 3 direction.



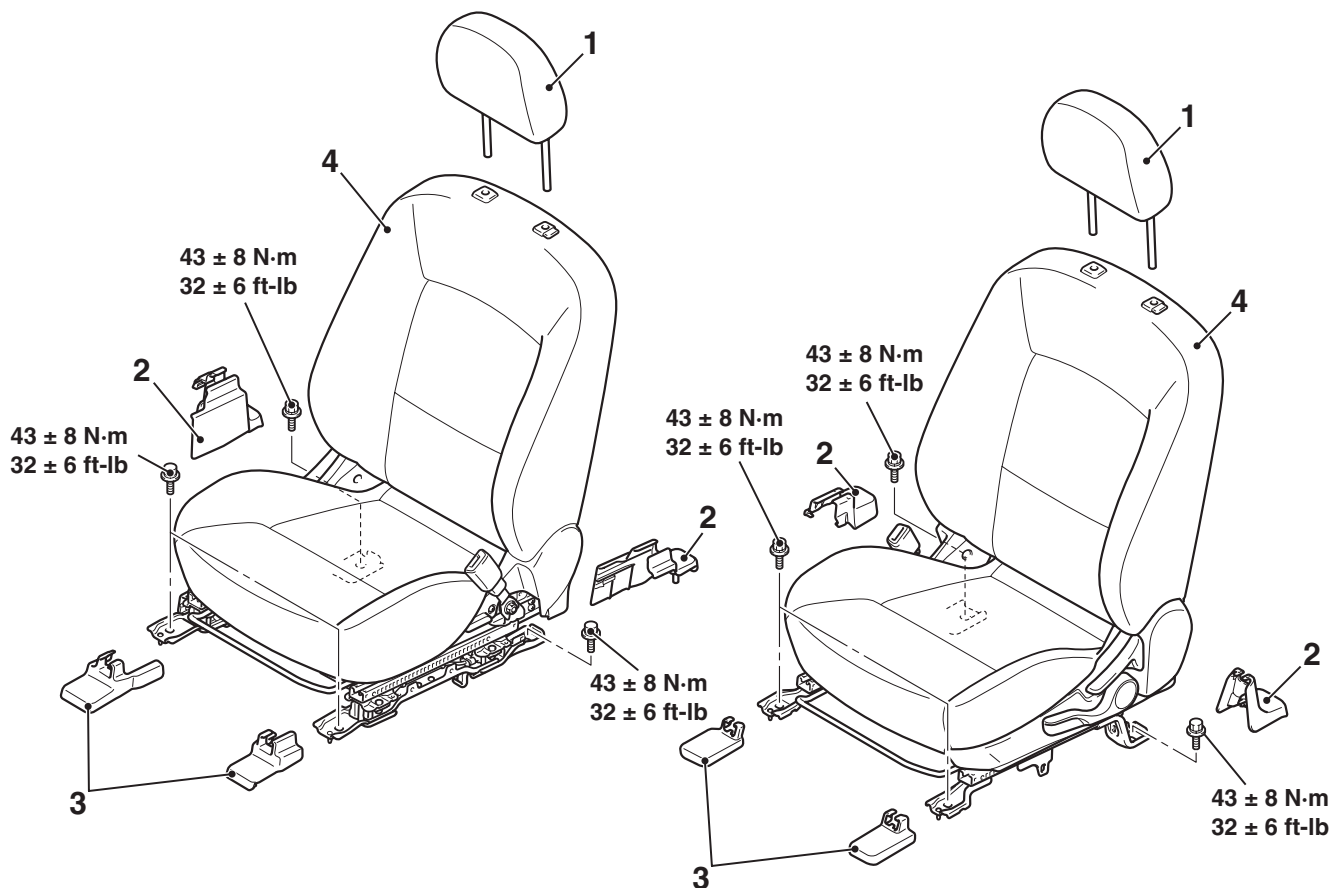
## FRONT SEAT ASSEMBLY

### REMOVAL AND INSTALLATION

M1522001301165

#### **⚠ WARNING**

Before removing the front seat assembly, refer to **GROUP 52B, Service Precautions P.52B-24** and **Air Bag Module and Clock Spring P.52B-367**.



AC609288AB

1. Head restraint  
**Front seat assembly removal steps**
2. Front seat anchor cover rear
3. Front seat anchor cover front

**Front seat assembly removal steps (Continued)**

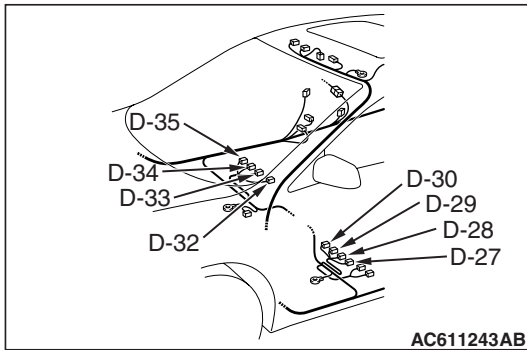
- <<A>>
- Harness connector
- >>A<<

4. Front seat assembly

**REMOVAL SERVICE POINT**

**<<A>> WIRING HARNESS CONNECTOR DISCONNECTION**

Disconnect the following wiring harness connectors:

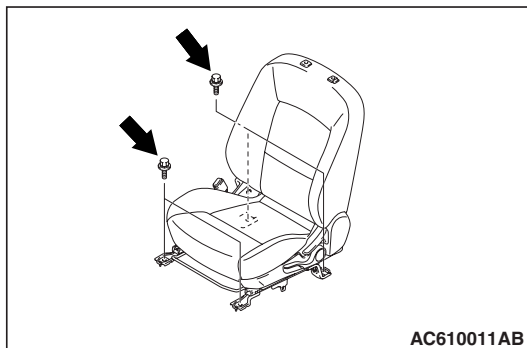


Connector number	Connector name
D-27 (4 – black)	Heated seat connector (driver's seat) <Vehicle with heated seat>
D-28 (2 – gray)	Seat slide sensor connector (driver's seat)
D-29 (4 – black)	Seat belt switch connector (driver's seat)
D-30 (2 – yellow)	Side air bag module (squib) connector (driver's seat) <Vehicles with side air bag>
D-32 (2 – yellow)	Side air bag module (squib) connector (front passenger's seat) <Vehicles with side air bag>
D-33 (4 – black)	Seat belt switch connector (front passenger's seat)
D-34 (4 – black)	Heated seat connector (passenger's seat) <Vehicle with heated seat>
D-35 (6)	Occupant classification system connector (passenger's seat)

**INSTALLATION SERVICE POINT**

**>>A<< FRONT SEAT ASSEMBLY INSTALLATION**

1. Temporarily tighten the bolts in all mounting locations shown in the illustration with no load applied to the front seat cushion and check the operation of the seat slide.
2. Tighten the bolts in all mounting locations to the specified torque.

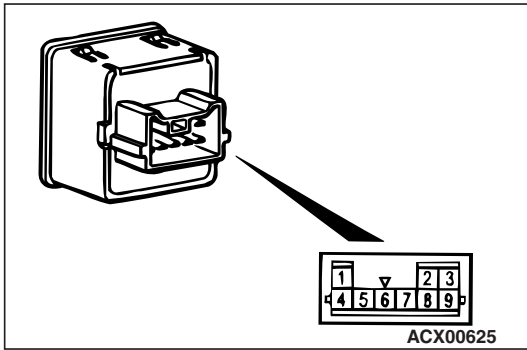


INSPECTION

M1522005500287

CONTINUITY TEST OF HEATED SEAT SWITCH

1. Check for continuity between terminals.



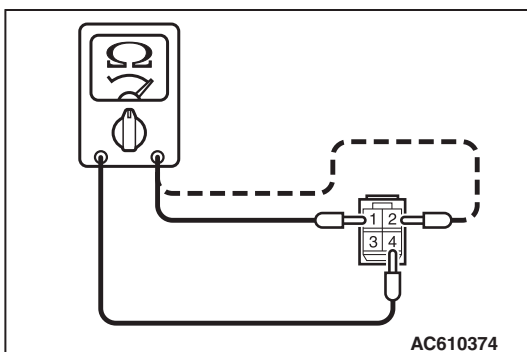
Item	Switch position	Tester connection	Specified condition
Driver's seat side	HI	1 -5, 3 -8	Continuity exists (2Ω or less)
	OFF	1 -5, 3 -5, 5 -8	Open circuit
	LO	3 -5	Continuity exists (2Ω or less)
Front passenger's seat side	HI	4 -5, 8 -9	Continuity exists (2Ω or less)
	OFF	4 -5, 5 -8, 5 -9	Open circuit
	LO	5 -9	Continuity exists (2Ω or less)

2. Check that the indicator is lighted at HI or LO when battery voltage is supplied to terminal 5 and terminal 8 is grounded.
3. Check that indicator is lighted when battery voltage is supplied to terminals 2 and terminal 6.

SEAT CUSHION HEATER CHECK

Measure the resistance between terminals.

**Standard value: At room temperature 20 °C (68 °F)**  
**Between terminals 1 and terminal 2**  
**Standard type: Approximately 3.82 ±4.66 ohms**  
**Spots type: Approximately 4.47 ±5.48 ohms**  
**Between terminals 1 and terminal 4**  
**Standard type: 8.90 ±10.88 ohms**  
**Spots type: 8.79 ±10.75 ohms**



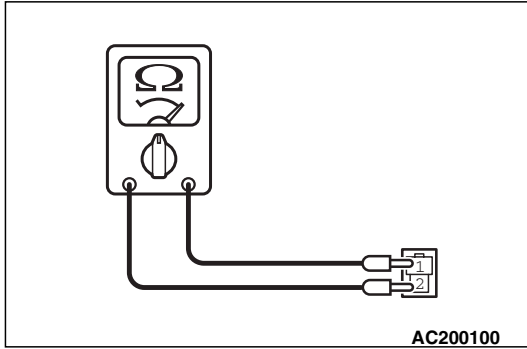
**SEATBACK HEATER CHECK**

Measure the resistance between terminals.

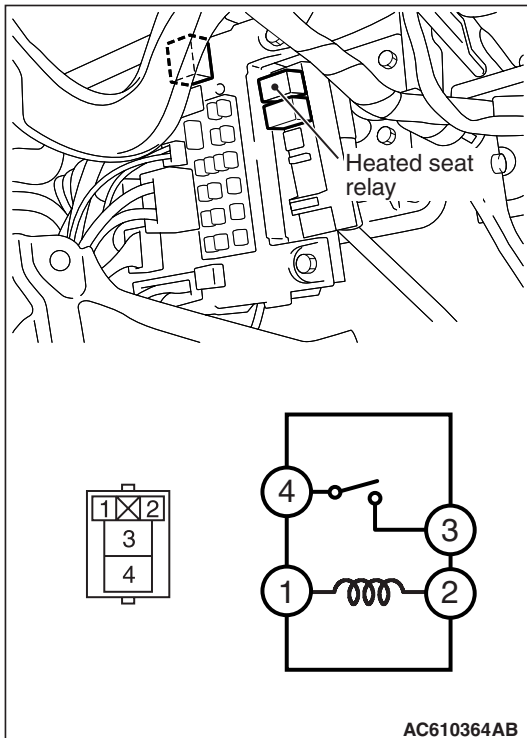
**Standard value: At room temperature 20 °C (68 °F)**

**Standard type: 4.86 ± 5.94 ohms**

**Spots type: 4.06 ± 4.96 ohms**



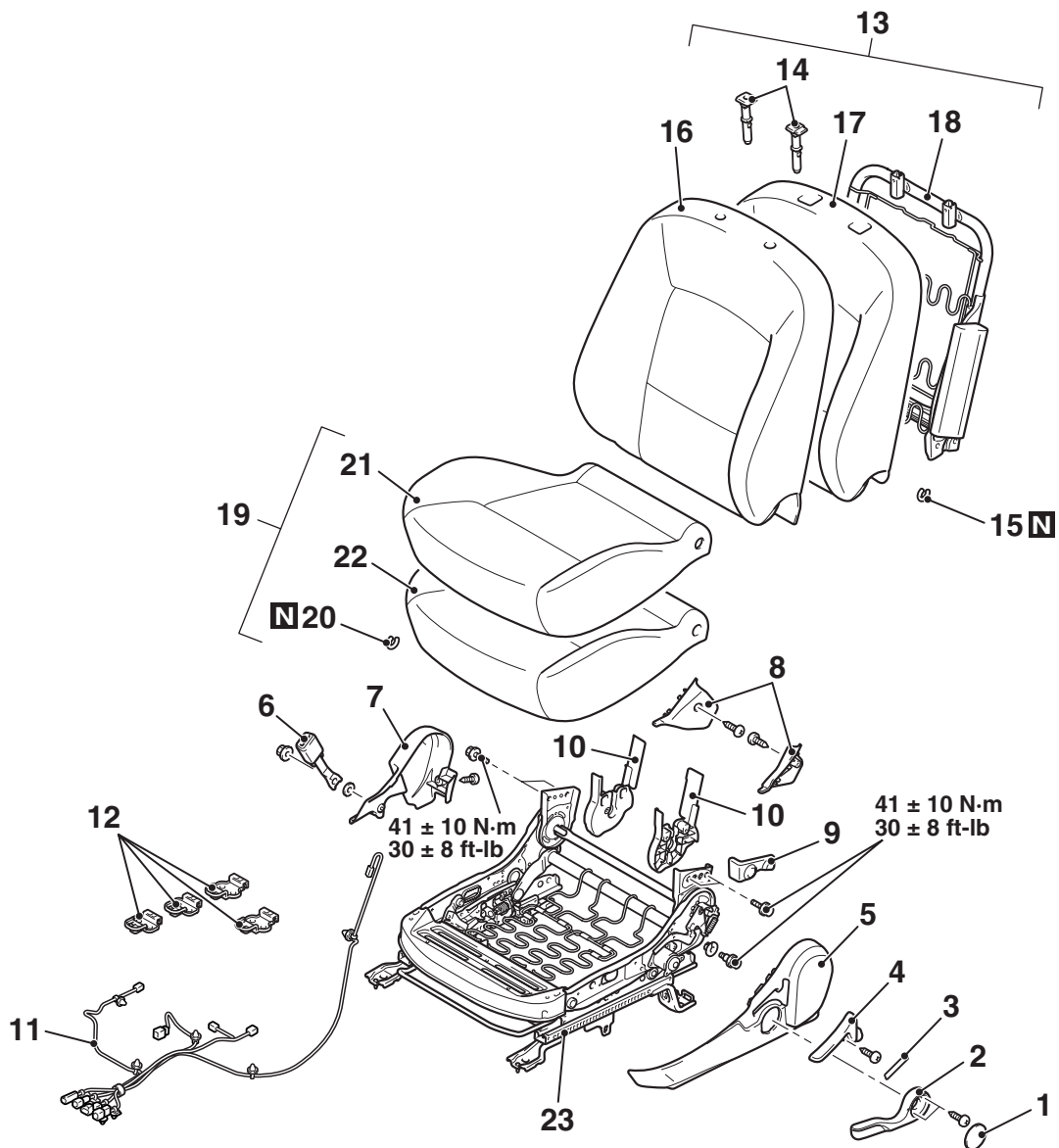
**HEATED SEAT RELAY CONTINUITY CHECK**



Battery voltage	Tester connection	Specified condition
Not applied	3 -4	Open circuit
<ul style="list-style-type: none"> <li>Connect terminal 1 to the positive battery terminal</li> <li>Connect terminal 2 to the negative battery terminal</li> </ul>	3 -4	Continuity exists (2Ω or less)

DISASSEMBLY AND ASSEMBLY

M1522001501211



AC609289AB

<<A>>

**Disassembly steps**

1. Height adjuster lever cap
2. Height adjuster lever
3. Reclining adjuster cap
4. Reclining adjuster lever
5. Side shield cover
6. Inner seat belt
7. Hinge cover
8. Side shield inner cover
9. Reclining adjuster upper cover
10. Reclining adjuster cover
11. Harness
12. Hook
13. Front seatback pad and frame assembly
14. Head restraint guide

<<B>>

**Disassembly steps (Continued)**

15. Hog ling
16. Front seatback cover
17. Front seatback pad
18. Front seatback frame
19. Front seat cushion assembly
20. Hog ling
21. Front seat cushion cover
22. Front seat cushion pad
23. Front seat cushion frame

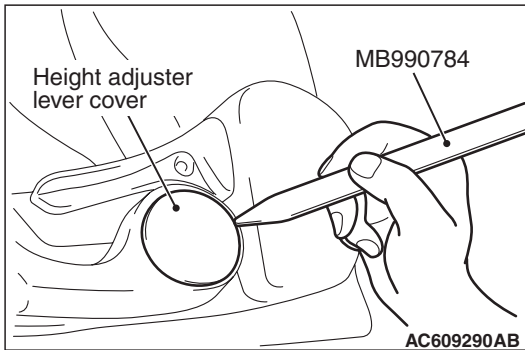
**Required Special Tool:**

- MB990784: Ornament Remover

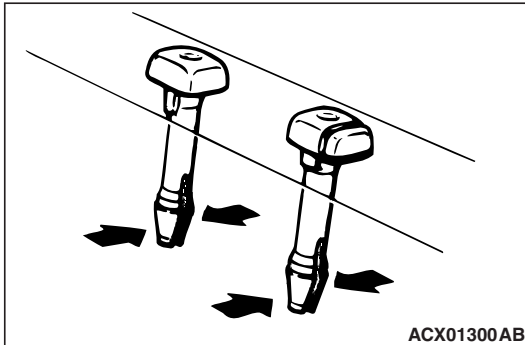
## REMOVAL SERVICE POINT

## &lt;&lt;A&gt;&gt; HEIGHT ADJUSTER CAP REMOVAL

Use special tool MB990784 as shown to remove the height adjuster lever cover.



## &lt;&lt;B&gt;&gt; HEAD RESTRAINT GUIDE REMOVAL

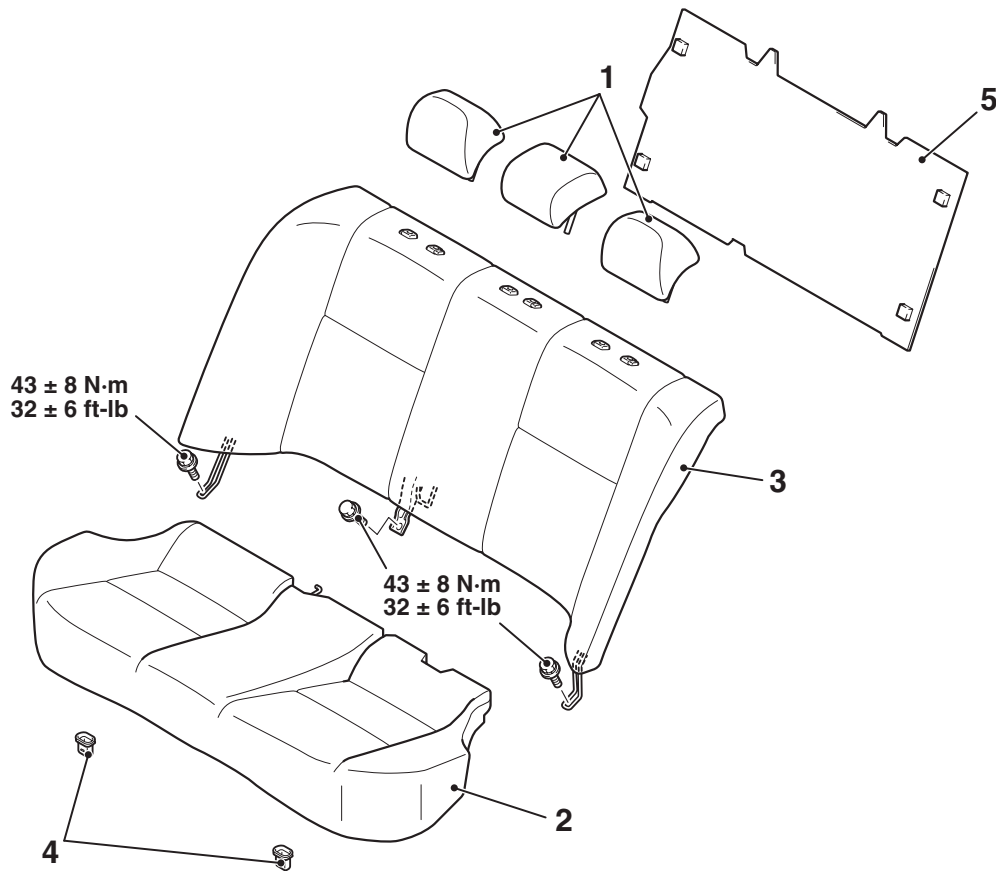


# REAR SEAT ASSEMBLY

## REMOVAL AND INSTALLATION

M1522001800639

<Bench seat>



AC611154AB

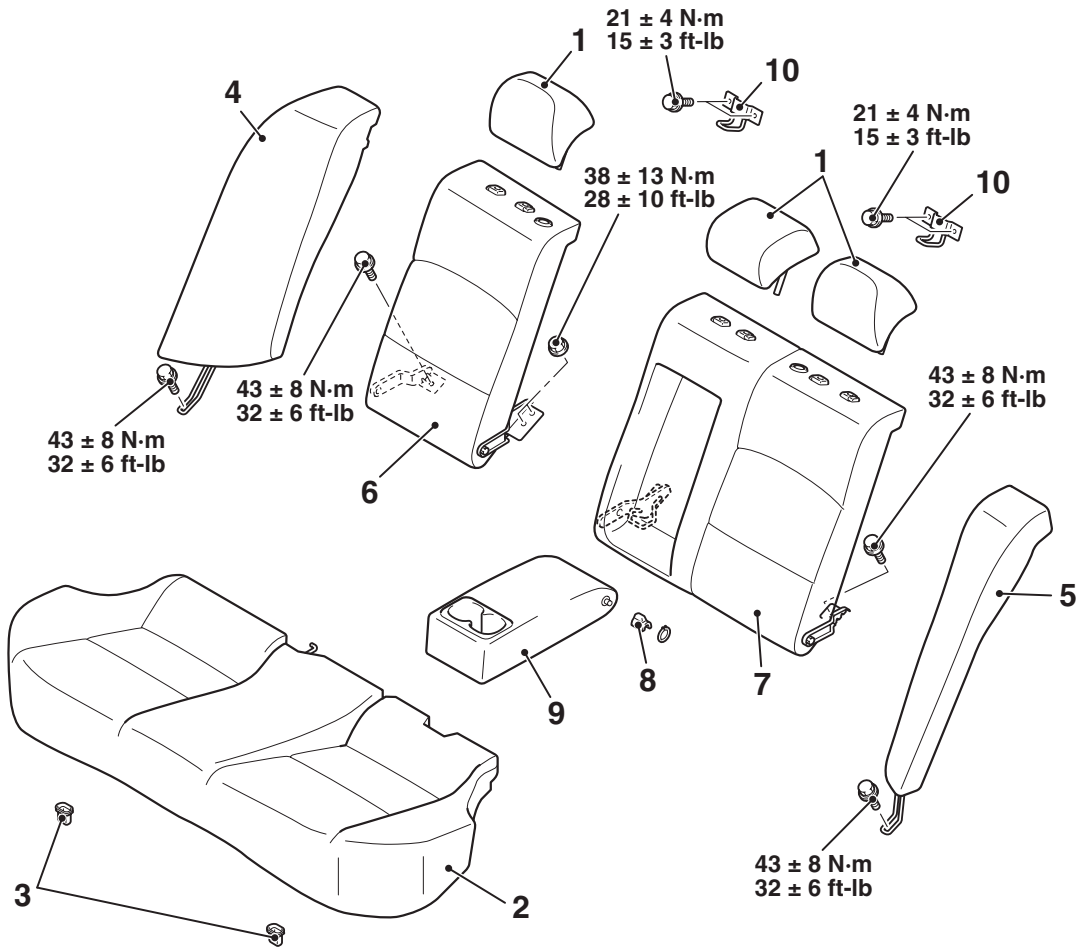
### Removal steps

- 1. Rear seat head restraint
- >>C<< 2. Rear seat cushion assembly
- >>A<< 3. Rear seatback assembly

### Removal steps (Continued)

- 4. Rear seat hook
- 5. Luggage room partition board

<Sprit seat>



AC609245AB

**Removal steps**

- 1. Rear seat head restraint
- >>C<< 2. Rear seat cushion assembly
- 3. Rear seat hook
- >>B<< 4. Rear seatback side assembly (RH)
- >>B<< 5. Rear seatback side assembly (LH)
- >>A<< 6. Rear seatback assembly (RH)

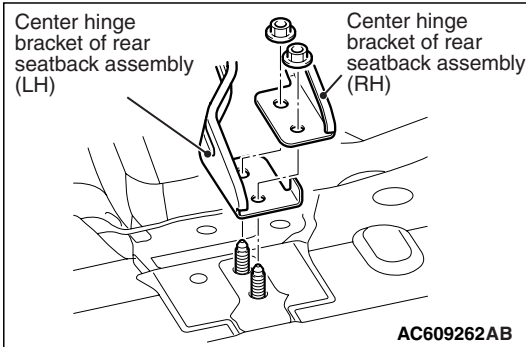
**Removal steps (Continued)**

- >>A<< 7. Rear seatback assembly (LH)
- 8. Spacer
- 9. Snap ring
- 10. Rear seat armrest
- 11. Rear seat striker

### INSTALLATION SERVICE POINTS

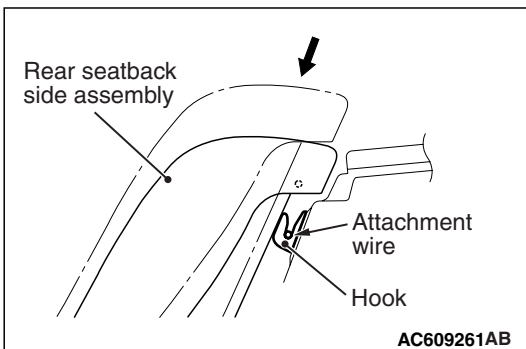
#### >>A<< INSTALLATION OF REAR SEATBACK ASSEMBLY (LH)/REAR SEATBACK ASSEMBLY (RH)

Place the center hinge bracket of the rear seatback assembly (LH) on top of the center hinge bracket of the rear seatback assembly (RH) for installation.



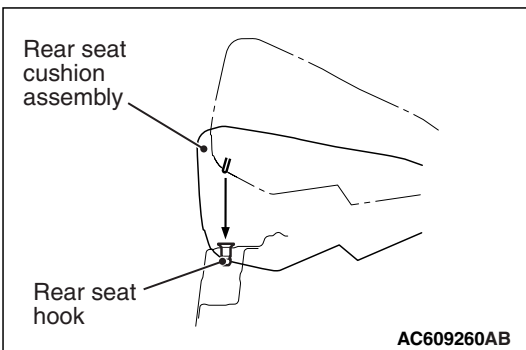
#### >>B<< INSTALLATION OF REAR SEATBACK SIDE ASSEMBLY (LH)/REAR SEATBACK SIDE ASSEMBLY (RH)

Press the rear seatback side assembly in the direction shown in the illustration and fit the attachment wire into the hook securely to install the rear seatback side assembly.



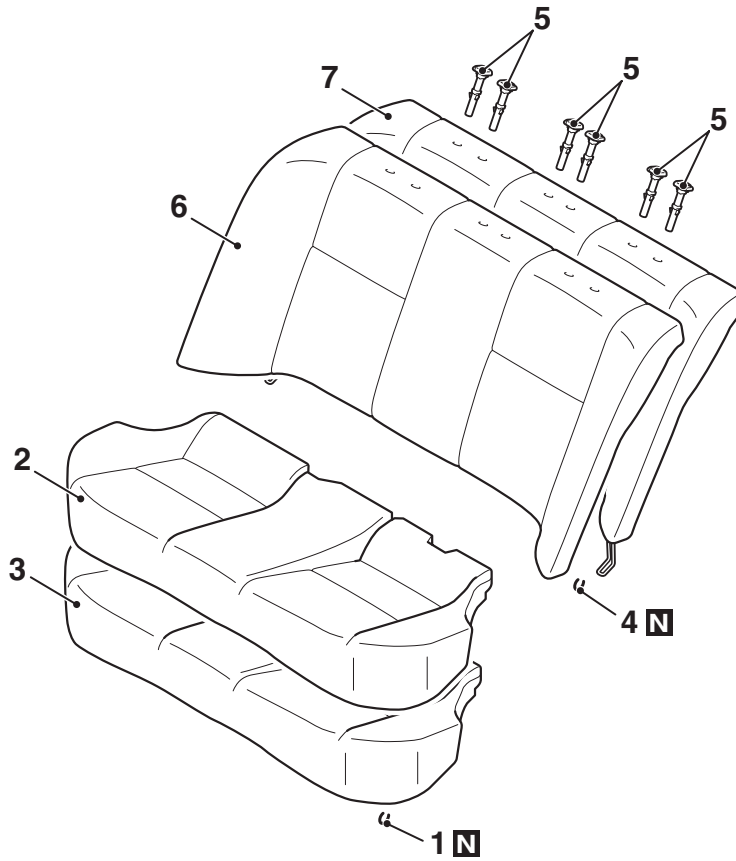
#### >>C<< INSTALLATION OF REAR SEAT CUSHION ASSEMBLY

Fit the rear seat cushion into the rear seat hook securely.



## DISASSEMBLY AND ASSEMBLY

M1522002000766

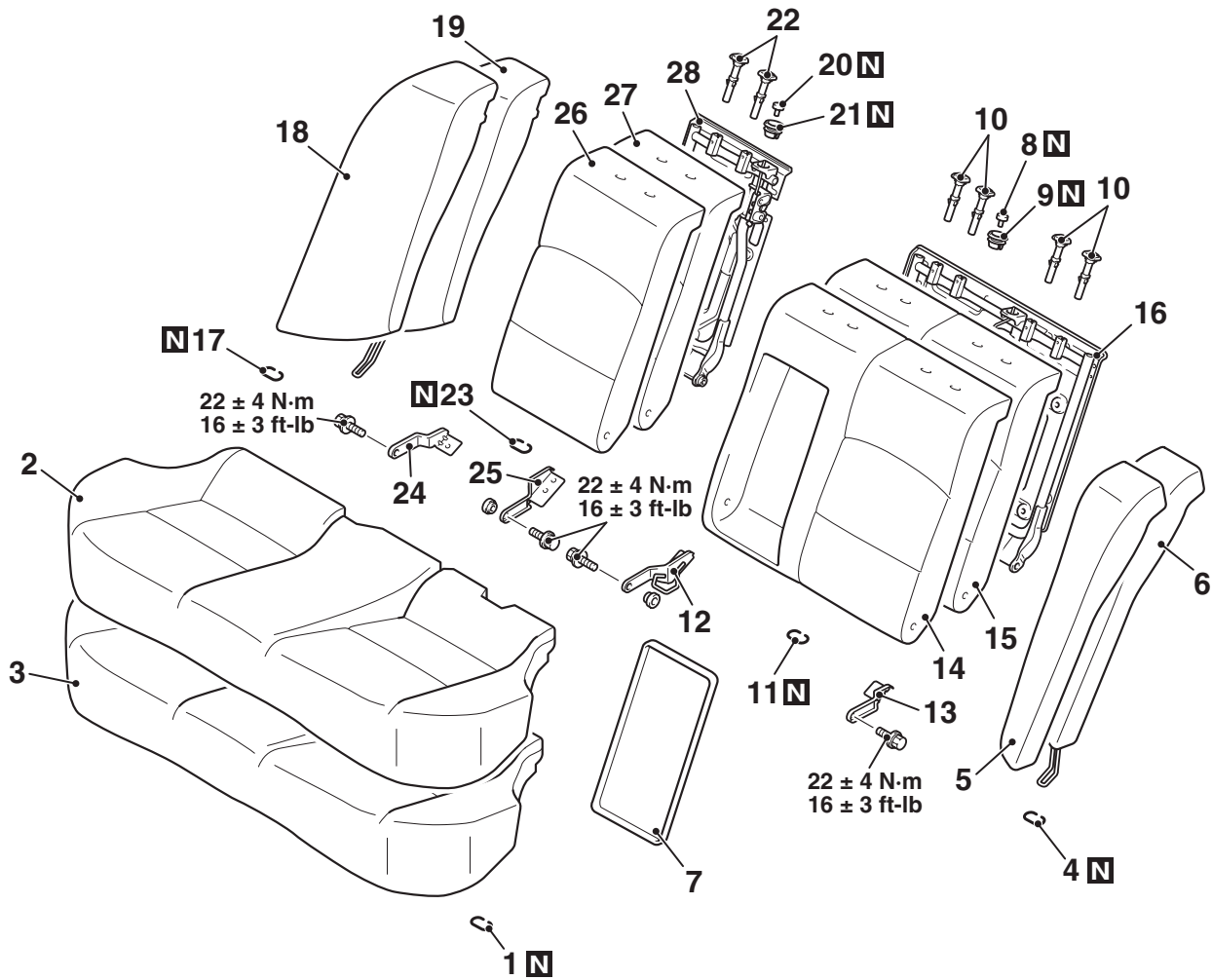
**Disassembly steps**

1. Hog ring
2. Rear seat cushion cover
3. Rear seat cushion pad
4. Hog ring

AC609246AB

**Disassembly steps (Continued)**

5. Rear seat head restraint guide
6. Rear seatback cover
7. Rear seatback pad



AC609247AB

**Disassembly steps**

1. Hog ring
2. Rear seat cushion cover
3. Rear seat cushion pad
4. Hog ring
5. Rear seatback side cover (LH)
6. Rear seatback side pad (LH)
7. Rear seatback armrest board
8. Rear seat folding knob garnish
9. Rear seat folding knob
10. Rear seat head restraint guide
11. Hog ring
12. Center hinge bracket (LH)
13. Side hinge bracket (LH)
14. Rear seatback cover (LH)

**Disassembly steps (Continued)**

15. Rear seatback pad (LH)
16. Rear seatback frame (LH)
17. Hog ring
18. Rear seatback side cover (RH)
19. Rear seatback side pad (RH)
20. Rear seat folding knob garnish
21. Rear seat folding knob
22. Rear seat head restraint guide
23. Hog ring
24. Side hinge bracket (RH)
25. Center hinge bracket (RH)
26. Rear seatback cover (RH)
27. Rear seatback pad (RH)
28. Rear seatback frame (RH)

## FRONT SEAT BELT

## REMOVAL AND INSTALLATION

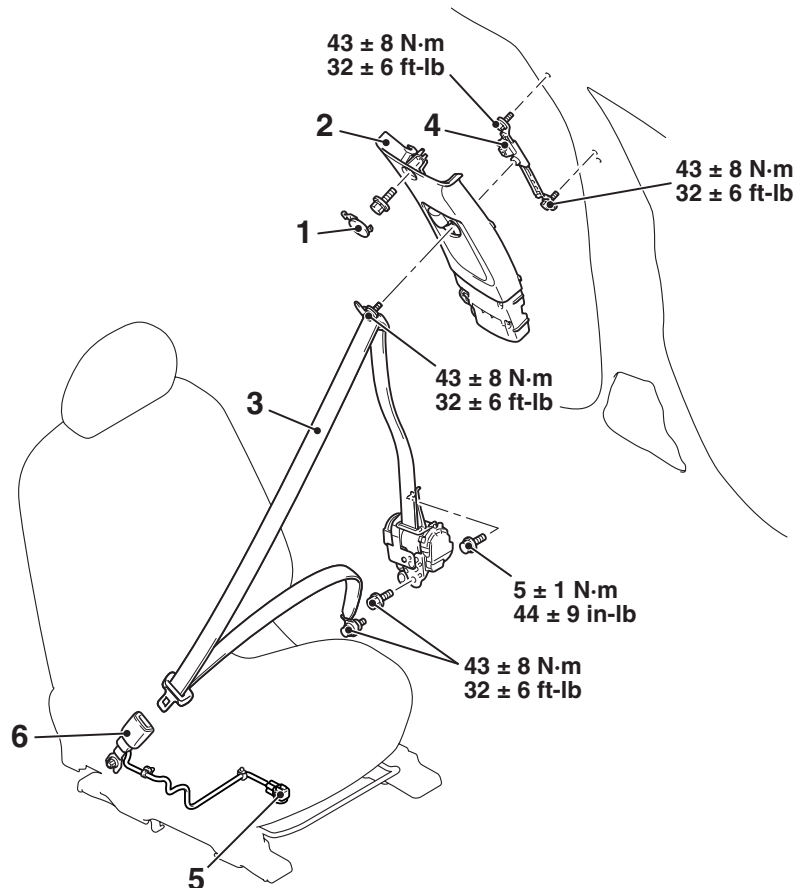
M1523001300972

**CAUTION**

**SRS:** Before removing and installing the seat belts with pre-tensioner, refer to GROUP 52B –SRS Service Precautions [P.52B-24](#) and Seat Belt with Pre-tensioner [P.52B-393](#).

**Pre-removal and Post-installation Operation**

- Turn the ignition key to the LOOK (OFF) position.
- Disconnect the negative battery terminal.



AC610305AB

&lt;&lt;A&gt;&gt;

**Outer seat belt removal steps**

1. Center pillar trim cup
  - Lower center pillar trim (Refer to [P.52A-10](#)).
2. Upper center pillar trim (Refer to [P.52A-10](#)).
3. Outer seat belt (Refer to GROUP 52B, Seat Belt with Pre-tensioner [P.52B-389](#)).
4. Adjustable seat belt anchor

**Inner seat belt removal steps**

5. Harness connector
  - Shield cover (Refer to [P.52A-21](#)).
6. Inner seat belt

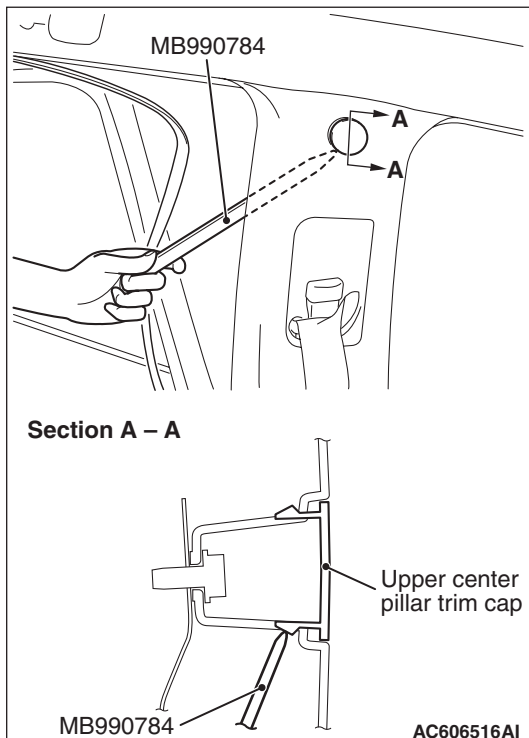
**Required Special Tool:**

- MB990784: Ornament Remover

**REMOVAL SERVICE POINT**

**<<A>> UPPER CENTER PILLAR TRIM CAP  
REMOVAL**

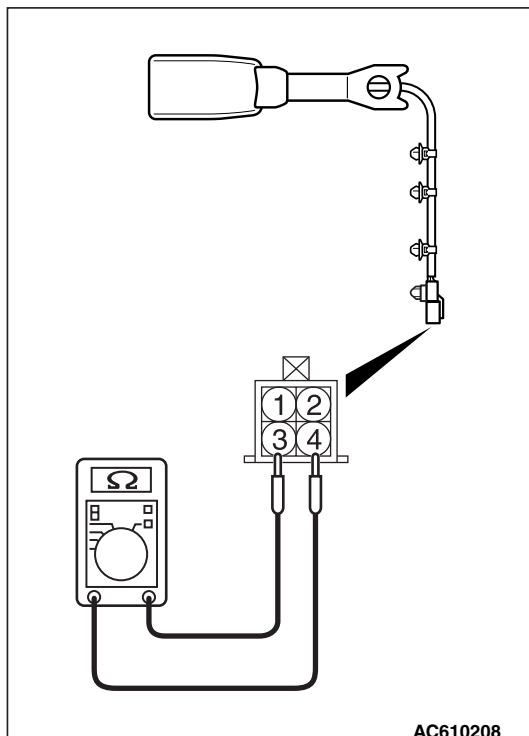
Remove the opening trim. Remove the upper center pillar trim cap by inserting the special tool MB990784 between the upper center pillar trim and body as shown in the illustration.



**INSPECTION**

M1523004400451

**SEAT BELT BUCKLE SWITCH CONTINUITY  
CHECK (DRIVER'S SIDE)**



Item	Tester connection	Specified condition
Fastened seat belt	1 -2	Open circuit
Unfastened seat belt	1 -2	Continuity exists (2Ω or less)
Fastened seat belt	3 -4	Open circuit
Unfastened seat belt	3 -4	Continuity exists (2Ω or less)





